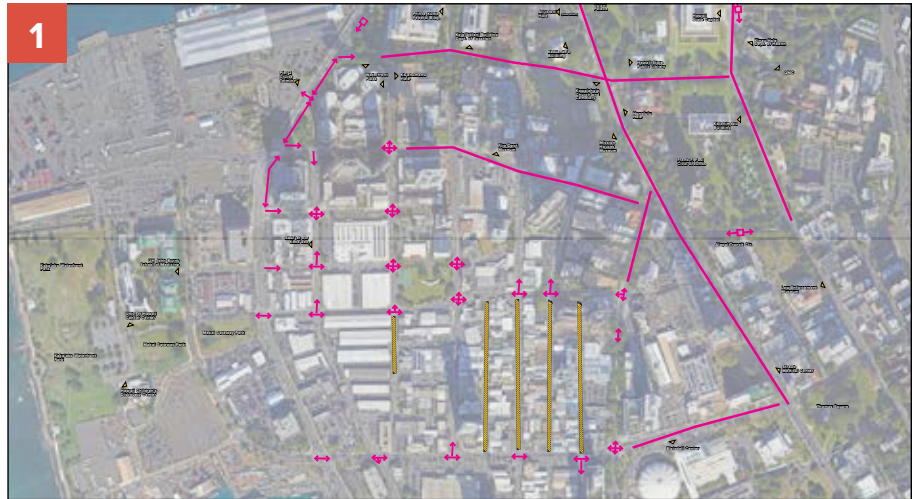




**DIRECTIONAL SIGN  
LOCATION PLANNING BASICS**

1. Determine ideal pedestrian pathways. Consider site conditions, sidewalks, crosswalks, accessible routes. Mark out the streets that define the extents of the TOD area and determine if any intersections or streets should be avoided. Generally, direction of travel will be inward from the streets that define these extents to the destinations. Start plotting sign locations along these routes.



2. A 10-minute walk time is generally equal to 2,400 feet. Draw a circle with a 2,400 foot radius and place it with the center point at the potential sign location. Any destination that falls within the circle and meets the specified criteria (see page 20) can be included on the sign.



3. Prioritize inclusion by distance. Since the path of travel will not be a straight line, calculate walk distances by measuring the distance along the pedestrian-friendly route. Divide the distance by 240 (the average distance in feet walked in one minute) and round to the nearest minute. (Google Maps Measure Distance Tool is a recommended method of measurement.)



4. When panel is full, a second sign in very close proximity can cover more destinations. Adding the Map Panel sign type will also help alert pedestrians to additional near-by destinations.





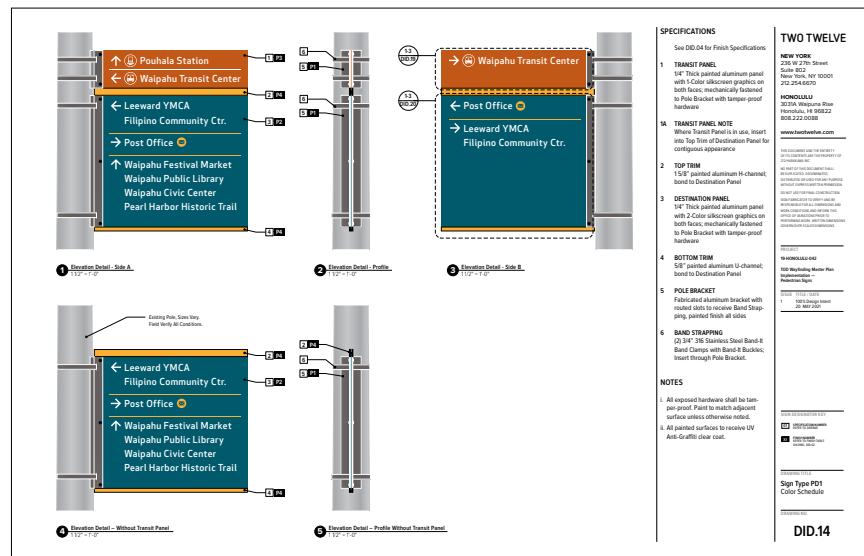
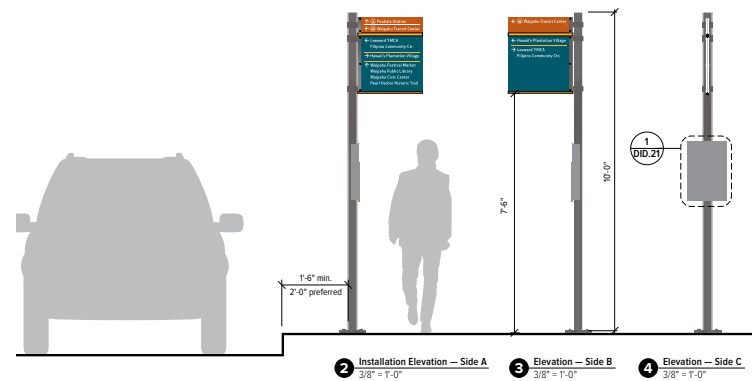
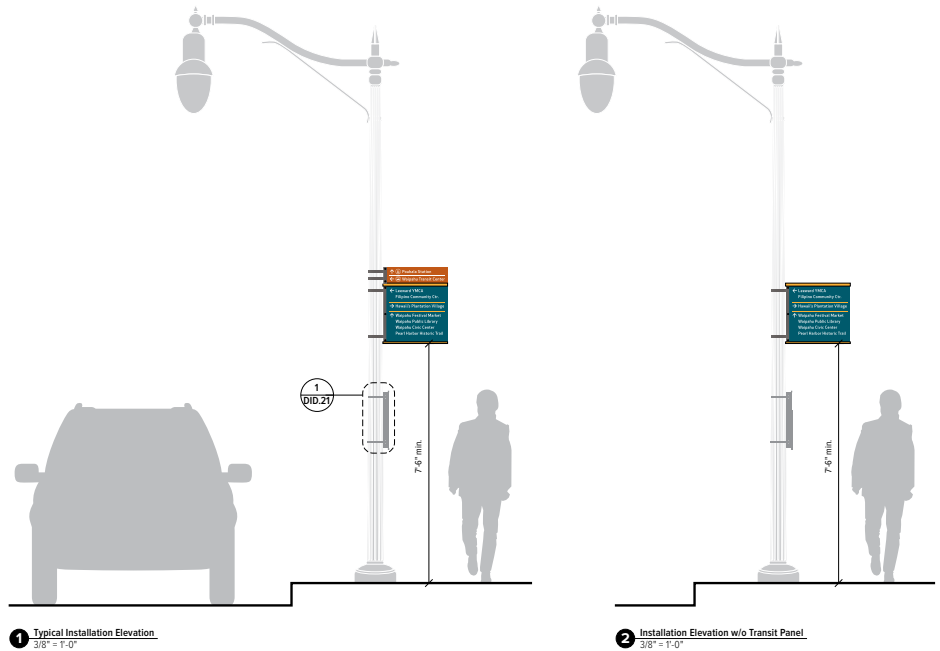


**SIGN TYPE: PEDESTRIAN DIRECTIONAL**

Pedestrian Directional signs are installed throughout neighborhoods to provide direction to specific destinations. They should be installed at major intersections and along designated complete or key street pedestrian networks.

The sign is constructed in two parts, the Transit Panel and the Destination Direction Panel. For neighborhoods where rail stations are not yet active, the Transit Panel can be used to direct to bus transit centers, or the panel installation can wait until there is a rail station or bus transit center.

Pedestrian Directional signs are designed to be installed onto existing street poles or on their own custom poles when street pole installation is not feasible. They can be installed in tandem with a Map Panel or on their own based upon the specific needs of the area. When there are several Pedestrian Directional signs in close proximity to each other the Map Panel can be omitted from some to help manage costs and maintenance.



Fabrication and Installation details for the Pedestrian Directional sign type