

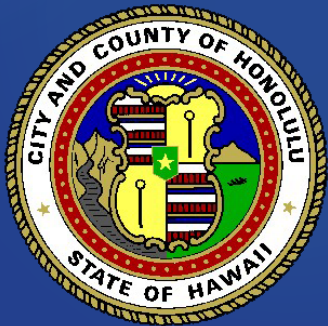
City and County of Honolulu

KALIHI RAIN BARREL PILOT PROGRAM





KALIHI RAIN BARREL PROGRAM



Rain Barrels...



- Capture rain water
- Reduce storm water runoff
- Reduce impacts on our streams and oceans
- Conserves water & \$\$

Kalihi Rain Barrel Requirements

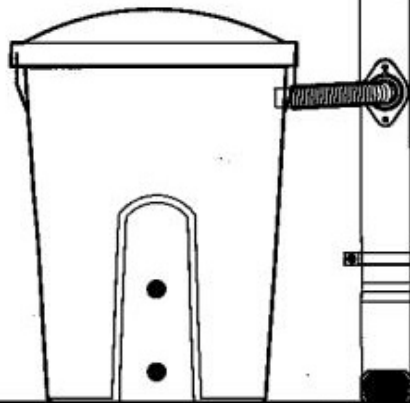
1. Homeowner must sign the waiver form
2. The home:
 - a. is in the Kalihi pilot program area
 - b. has gutters and downspouts
 - c. has downspouts that drain to pavement
 - d. has plants that can use rain water

Rain Barrel Installation Process

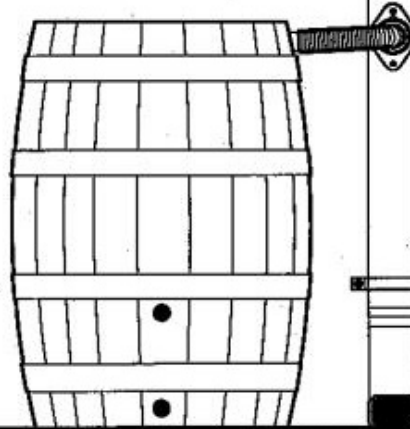
- 1) Attend Workshop
- 2) Turn in Waiver Form
- 3) Receive Rain Barrel & Downspout Diverter Kit

- 4) Install at your home

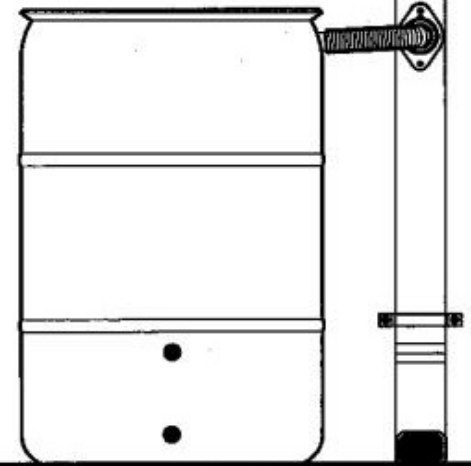
Rain Barrel Containers



a. Plastic Waste Barrel (Open Top)



b. Wood Barrel



c. Recycled Plastic Barrel (Sealed)

Diverter Kit



Clean out & Spigot



Flexi-fit downspout diverter

Downspouts Diverter Types



Rectangular
2" x 3"

Circular

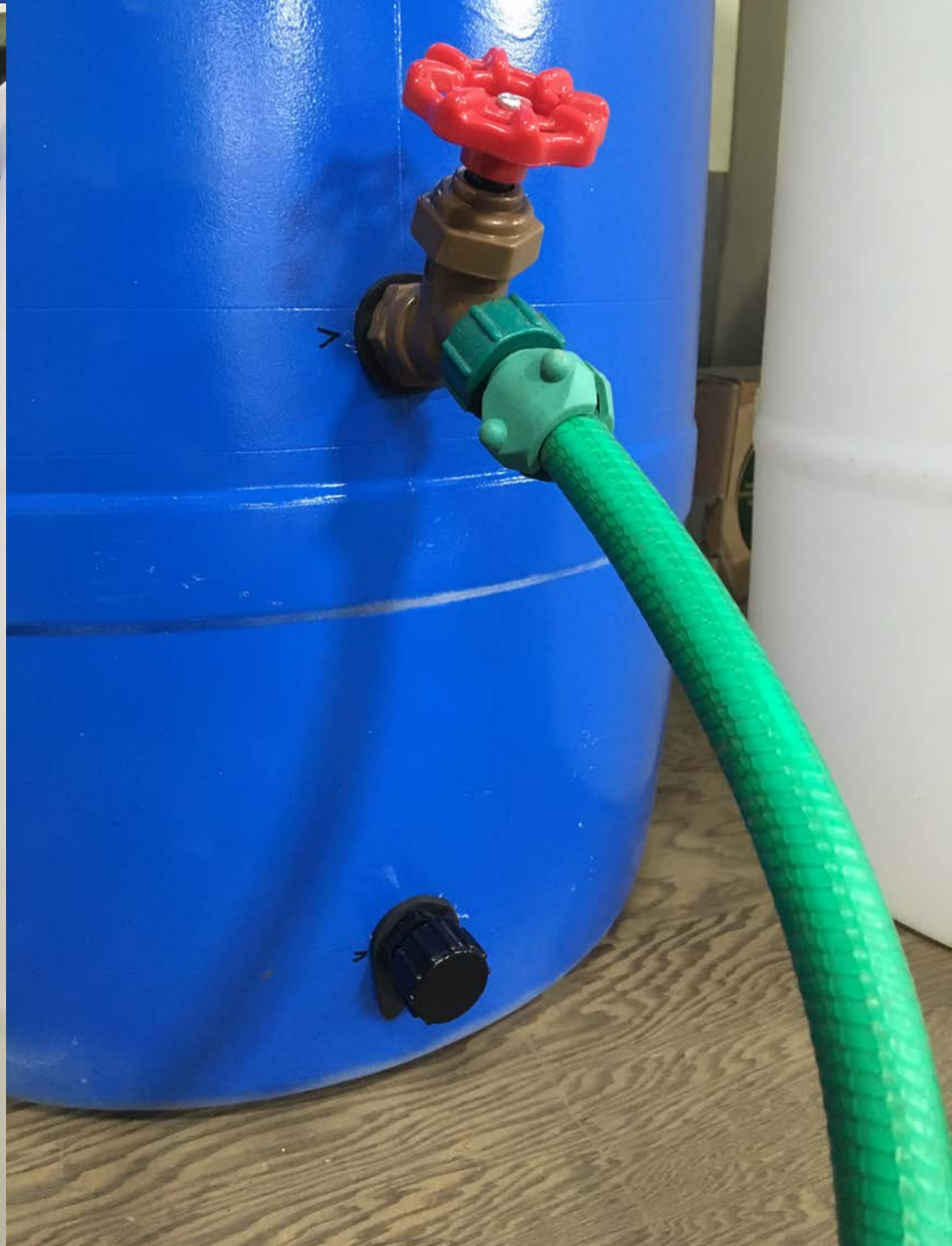
Rectangular
3" x 4"

1. Choose Rain Barrel Location



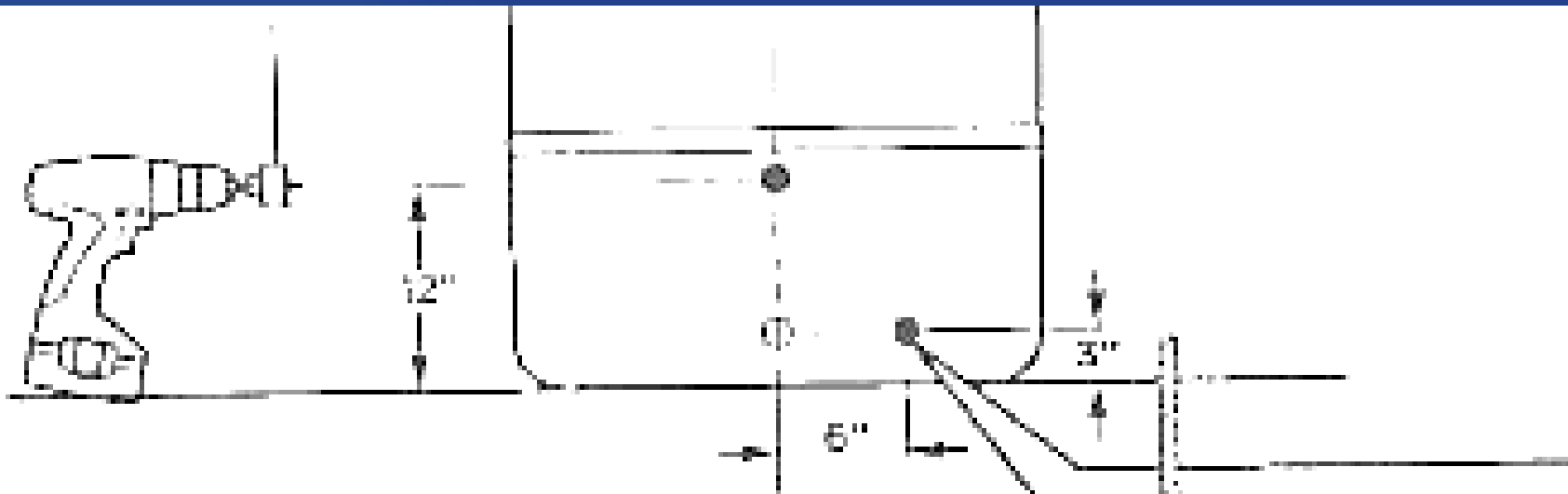
- a. Near a downspout; 6" to 28" away
 - b. Space large enough for the barrel (about 36" tall by 22" diameter)
- Level the area
 - Elevate your rain barrel for easy spigot access. You can use cement blocks or bricks. Do not raise more than 18" for safety.

2. Install Spigot & Cleanout

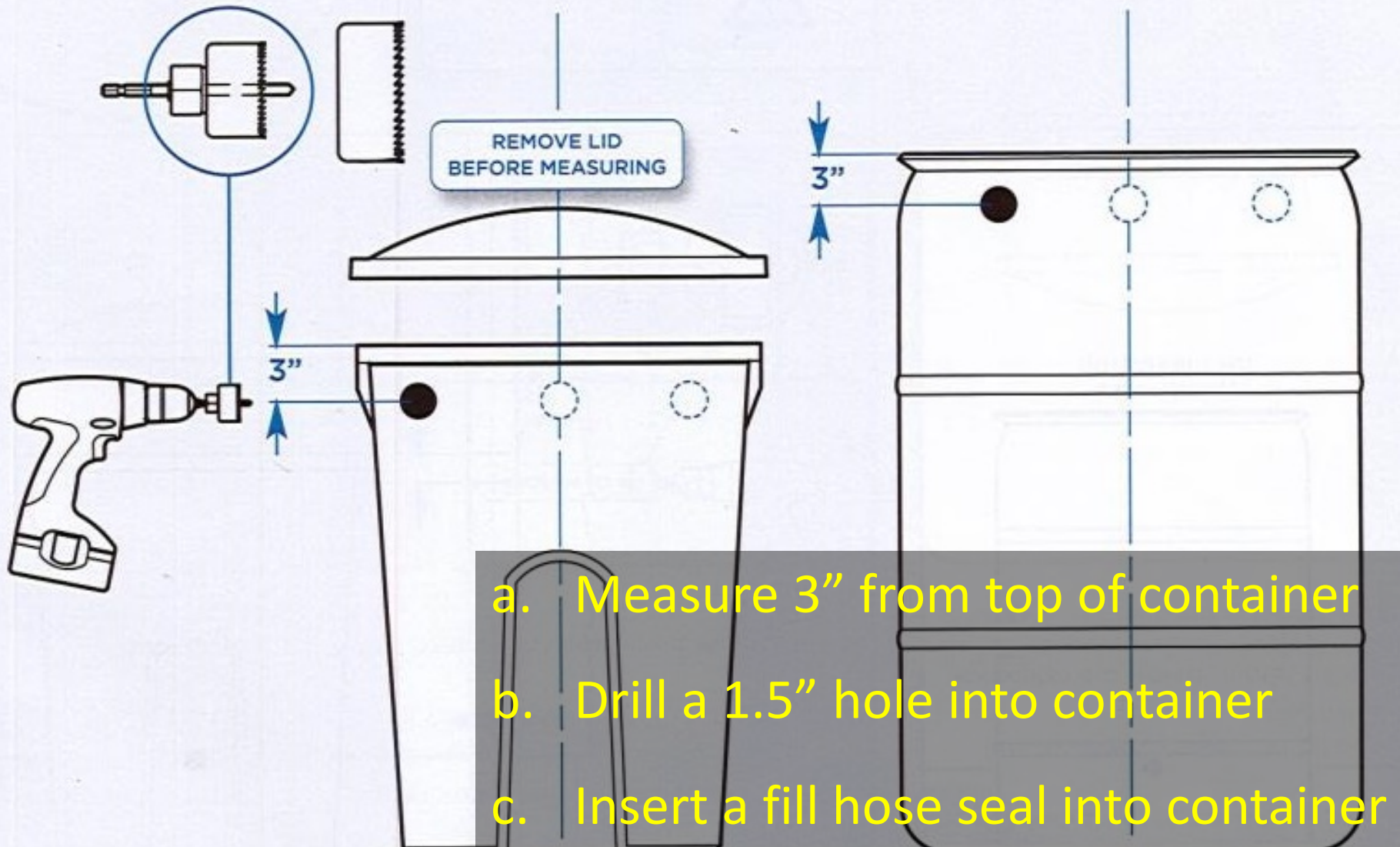


2. Install Spigot & Cleanout

- Mark and drill hole for spigot 12" from bottom
- Mark and drill hole for cleanout 3" from bottom (optional)
- Insert threaded seal and spigot; insert threaded seal and drain plug



3. Install fill hose



4. Install Diverter Kit



1. Drill a 2" hole into the downspout
2. Insert a flexi-fit downspout diverter
3. Secure with screws
4. Connect hose into cuff and into barrel



Prevent Algae Growth

1. Sunlight causes algae to grow
2. Paint/decorate to block sunlight



Painting Ideas



Painting Recommendations

A woman in a white shirt and dark pants is painting a large, blue ceramic jar with a white star and floral patterns. The jar is on a table outdoors, and there are other jars and painting supplies nearby. The background shows trees and other people, suggesting a community event or festival.

- 1. Rough up surface with fine sand paper**
- 2. Wash off dust and let dry**
- 3. Use a plastic paint primer**
- 4. Paint; let dry 48 hours**
- 5. Apply a top coat/sealant**

5. Place Sticker on Rain Barrel



CONTAIN THE RAIN

cleanwaterhonolulu.com



DO NOT DRINK

6. Use the Water

- Do NOT drink
- Use for lawns / gardening / cleaning over lawn area
- Use water before big rains
- Closed system = no mosquitos



Maintenance



1. Use the water!
2. Regularly clean downspout diverter to remove leaves/debris
3. Clean rain barrel as needed for sediment or algae build-up

Diverter Maintenance



1. Remove hose from downspout
2. Remove the diverter from downspout (remove screws) and clean out diverter by removing leaves and rinsing if needed
3. Reinstall diverter in downspout (put in screws) and reconnect the hose.

Rain Barrel Maintenance

1. Use / drain water
2. Disconnect from downspout
3. Rinse out; can use dish soap
4. To kill algae, rinse with dilute bleach water ($\frac{3}{4}$ cup bleach/gallon) – dispose of bleach water down indoor drain
5. Reconnect to downspout

Before you leave:

1. **Sign & submit waiver form.**
Take a copy if you need your landlord to sign the form.
2. **Complete an evaluation.**
3. **Receive a barrel, diverter kit and sticker.**

Questions?

- Email: camik@g70.design