



Marshallese

Honolulu Elections Division

Marshallese Language Kit



Laajrakin Melele ko Kobban

Table of Contents

Melele Ko Kōn Ri-Vote

Voter Information Brochure

2024 Melele eo an Ribout eo ilo Ekelel

2024 Election Voter Information

Peba in Kanne Ablikajon ñan Bout (Melele in Kajinet kin Ukok)

Voter Registration Application Form (Translation Guide)

Peba in Ablikajon ñan Absentee an Hawaii (Melele in Kajinet kin Ukok)

Hawaii Absentee Application Form (Translation Guide)

Ablikajon ñan Polot ilo am Jede Lok (Melele in Kajinet kin Ukok)

Application for In-Person Ballot (Translation Guide)

Kajitōk ko Rekut ilo Jikin Jibañ eo an Ribout

Voter Service Center FAQ

Kōmelele ko kin Bout (Melele in Kajinet kin Ukok)

Voting Instructions (Translation Guide)

Polot ilo Facsimile

(Jikin Melele kin Polot eo an 2024 ikijen naan im ukok)

Facsimile Ballot (Glossary of 2024 Ballot terms and translation)

#10 Kilin Letā

#10 Envelope

Inkanek Kom Kuh In Orekmakin In Register In Fot

Online e ke www.olvr.hawaii.gov

Ke puhsren leta kuh kom kuh pac in tuhkuh in mahno neke:

Elections Division
Office of the City Clerk
530 S. King St, Room 100
Honolulu, HI 96813

Download iyac ahpliikesin lom an inse:
www.honoluluelections.us

Kuh kom kuh in sruhkak sie e ke an ekasr tahklac ten inge:

- Nien Orekma kuh Ohfuhs lun Siti Uh
- Ohfuhs kuh nien Subpeyuk Leta kuh Pos Ohfush
- Nien Orek Pepu in Utuk Sitosah
- Inkaiaeyen Nien Orekma kuh Ohfuhs fin an Hawaii
- Laepraci su ma Ikkack Nu sin Mwet Nuhkweua
- Ke Puk in Ahkahlwemye ke Twacks luhn an Hawaii
- Ke Puk in Tacuhfon fin Acn Hawaii, Srarangrang Ke Puk An

Ke pacl se kom register in fot ac oraclah paye a akfalyelah ma kom enenuh in akfasryelah pepuh in ahkahlwemye lah kom kuh in fot yenuh, oasr pepuh in fot se ac tuhlah suhpweyuhkwot nuh yurum ke puhsren leta. A tuhlah wacngihn acn sahyac ac tuhlah ikacklah nuhke nien fot ke len in fot an sahyen acn ma ahkahlwemyehk tarii!



Suk Kuht Ke:
(808) 768-3800
www.honoluluelections.us

City & County of Honolulu
Office of the City Clerk, Elections Division
530 S King St, 100
Honolulu, HI 96813

Len kom enenuh in ahkahlwemye lah kom ac tiac wi fot fin acn uh

Kom kuh in som neke website lasr uh kuh pangon ohfuhs lasr uh in suk kasru.

Kom kuh in ukwe kuht wi fespuk kuh social mitia fin oasr enenuh lom in etuh lah meac sasuh!



Orekmakin Twitter
@HNLelections



@HNLelections



@HNLelections



MARK • MAIL • MATTER

Paid for by the taxpayers of the City and County of Honolulu



**Siti & Kaunti lun an Honolulu
Ohfuhs lun Mwet Sim lun City
Nien Karihngin Sulohsohl**

**MWE AHKAHLWEMYE
NU SUM**

Inkanek Kom Kuh In Orekmakin In Register In Fot

Online e ke www.olvr.hawaii.gov

Ke puhsren leta kuh kom kuh pac in tuhkuh in mahno neke:

Elections Division
Office of the City Clerk
530 S. King St, Room 100
Honolulu, HI 96813

Download iyac ahpliikesin lom an inse:
www.honoluluelections.us

Kuh kom kuh in sruhkak sie e ke an ekasr tahklac ten inge:

- Nien Orekma kuh Ohfuhs lun Siti Uh
- Ohfuhs kuh nien Subpeyuk Leta kuh Pos Ohfush
- Nien Orek Pepu in Utuk Sitosah
- Inkaiaeyen Nien Orekma kuh Ohfuhs fin an Hawaii
- Laepraci su ma Ikkack Nu sin Mwet Nuhkweua
- Ke Puk in Ahkahlwemye ke Twacks luhn an Hawaii
- Ke Puk in Tacuhfon fin Acn Hawaii, Srarangrang Ke Puk An

Ke pacl se kom register in fot ac oraclah paye a akfalyelah ma kom enenuh in akfasryelah pepuh in ahkahlwemye lah kom kuh in fot yenuh, oasr pepuh in fot se ac tuhlah suhpweyuhkwot nuh yurum ke puhsren leta. A tuhlah wacngihn acn sahyac ac tuhlah ikacklah nuhke nien fot ke len in fot an sahyen acn ma ahkahlwemyehk tarii!



Suk Kuht Ke:
(808) 768-3800
www.honoluluelections.us

City & County of Honolulu
Office of the City Clerk, Elections Division
530 S King St, 100
Honolulu, HI 96813

Len kom enenuh in ahkahlwemye lah kom ac tiac wi fot fin acn uh

Kom kuh in som neke website lasr uh kuh pangon ohfuhs lasr uh in suk kasru.

Kom kuh in ukwe kuht wi fespuk kuh social mitia fin oasr enenuh lom in etuh lah meac sasuh!



Orekmakin Twitter
@HNLelections



@HNLelections



@HNLelections



MARK • MAIL • MATTER

Paid for by the taxpayers of the City and County of Honolulu



**Siti & Kaunti lun an Honolulu
Ohfuhs lun Mwet Sim lun City
Nien Karihngin Sulohsohl**

**MWE AHKAHLWEMYE
NU SUM**



Melele eo an Ribout ilo City im County eo an Honolulu

Ekelel eo Kein Kajuon

Jadede, Okwoj 10, 2024

General Election

Tuje, Nobomba 5, 2024

Raan Aurok ko Relablok:

Len Safla In Sang Ine In Wi Fot

Ekelel eo Kein Kajuon- Wenje, Jułae 31, 2024*

Ekelel eo Ekka- Mande, Oktoba 28, 2024*

**Kwōmaron woñmaanlok in kadeloñ etam jabdewōt ien ilo am kōjerbal Kein Jerbal in Kadeloñ Etam Online (Online Voter Registration System) ak ilo am jede lok ñan Jikin Jibañ Ribout*

Jikin im Raan ko an Jikin Jibañ Ribout

Lale laajrakin āt ko emōj lelok ilo jemlokin peba in

Jikin im Raan ko ñan Lelok Peba

Lale laajrakin āt ko emōj lelok ilo jemlokin peba in

Kadeloñ Etam Online

Juon Laijen in Kattar an State eo an Hawaii an tōrre in im ej jerbal ñe ejab juon ID an State eo an Hawaii ej aikuj ñan am kōjerbal kein jerbal in kadeloñ etan ribout online.

Kōjerbal link eo ijin lal ñan am etal ñan Jikin Kadeloñ Etan Ribout Online ilo Opij eo an Ekelel an State eo an Hawaii

[Link eo ñan Kadeloñ Etan Ribout Online](#)



3 wāween ko rebidodo ñan kadeloñ etam

1) Register Online

Ebed kein jermal in Kadeloñ Etan Ribout Online an Opij in Ekelel eo an State ilo website eo an Opij eo ej lale Ekelel. Link eo ñan Kadeloñ Etan Ribout Online

Juon Laijen in Kattar an State eo an Hawaii an tōrre in im ej jermal ak ID in State eo an Hawaii aikuj ñan kōjermal kein jermal eo ñan kadeloñ etan ribout online. Aoleb kadeloñ etan ribout im kajitōk ko ñan bout jen ilikin renaj loor raan ko aliktata emōj kalikar.

2) Download ae juon Peba in Ablikajon

Download ae ablikajon eo, ñan print, mael, ijin: Link eo ñan Peba in Ablikajon

Lelok juon peba emōj am kadedelok elañe ej kab kein kajuon ien am kadeloñ etam ñan bout ak elañe emōj an oktak atorej eo am ak etam.

3) Ia eo kwōn Bōke juon Ablikajon ilo Peba

Kwōmaron loe ablikajon ko ilo peba ilo jikin ko laajrak ebidodo am etal ñani:

- Link ñan Satellite City Hall ko
- United States Post Office ko
- Opij ko rej lelok laijen in kattar (kadeloñ etan ribout wōt)
- Eloñ opij ko an an kien eo an State eo an Hawaii (kadeloñ etan ribout wōt)
- Laibrarae ko Rebellok ñan Aoleb Armij
- Bok in Melele kin Eowoj an State eo an Hawaii
- Peij lal ko an Hawaiian Telcom (kadeloñ etan ribout wōt, alikin Melele in Kajinet ikijen Bojak ñan Jorrāan ko Relab)

Ijellokun opij ko an laijen in kattōr (im rej kakoba peba in kadeloñ etan ribout einwōt mōttan ablikajon in laijen in kattōr eo), jikin ko emōj laajrak ettaer ijin loñ ebañ aen peba in ablikajon ko emōj aer dedelok.

Jouj im kaju mael ae lok peba ko emōj aer dedelok ñan Opij eo an Clerk eo ej Bōk Eddon Ekelel ilo Opij eo an City:

Opij eo ej bōk eddon Ekelel
Opij eo an Clerk eo an City
530 S. King St, 100
Honolulu, Hawaii 96813



Kōmelele im Ekelel ko ikijen Bout

Aoleb ribout ro ejimwe an kar deloñ ettaer jen raan in kadeloñ etan ribout aliktata renaj mael ibben juon polot.

Bout ilo Mael

Renaj mael ae lok peba in polot ko ewōr laajrakin men kein:

- Juon polot;
- Juon kein kōbenjak ak kilin letā (ialo);
- Kilin Letā in Karool Polot; im
- Kōmelele ko ikijen bout

Buñten ko ñan Lelok Polot ilo Mael

1. Etale jikin ko jimor ilo polot eo/ko im aoleb peba in kōmelele ko emōj likūt. Kakōlle kelet ko am mokta ilo juon peba eo ejenolak.
2. Bout ilo am kalore aoleben jikin bout eo iturin kelet eo am kin juon pen kalor kilmej ak būlu.
3. Likūt polot in bout eo iloan kein kōbenjak ialo ak kilin letā eo innem kiil kilin letā eo
4. Likūt kein kōbenjak ialo ak kilin letā eo iloan Kilin Letā in Karool Polot (uwaak eo an bijnej). Kili mejan kilin leta eo.
5. JAINI peba in kamool eo ilo Kilin Letā in Karool Pollot eo. Polot eo am EBAÑ bōnōbōn elañe kein kamool eo ejab jain.
6. **Mael ae lok kilin letā eo ilo am jab rumij bwe ren loe mokta jen 7:00 awa jota ilo Raan in Ekelel. Iomwin kakien eo an state, jabdewōt polot ilo mael renaj loe alikin 7:00 awa jota ilo Raan in Ekelel eo rebañ bōnōbōn**

Polot in Mael ko Rejorrān

Emaron wōr im ej walok bōd. Jouj im jab kōjermal teep ak dān mouj ko ñan kōmman kajimwe, ak jeje ko ñan kajimwe bōd ko ilo polot eo am. Ñe kwōnaj kōmmane juon bōd, kūrtoke opij eo amim ñan amim bar lewaj juon polot kāāl.

Ekkar ñan wāween ko (waanjoñok, ien, bar jet) rijerbal ro amim renaj lewaj juon wāween eo ejimwe ñan jibañ am lelok bout eo am. Bōtab, kwōn jelā ke ekkar ñan ien im wāween ko, kwōmaron aikuj make jede lok in bōke bar juon peba in polot ak bout ilo juon ian Jikin Bout ko.

Bout kin Absentee Polot (ilo am jako jen jikin eo kwōj jokwe)

Ablikajon eo ewōr “len” im juon alen – Kōerbal ablikajon in elañe kwōnaj jako jen mweo imōm ilo ien ekelel eo. Polot eo am enaj mael ñan atorej eo an jidik ien kwōnaj lelok

Link eo an Ablikajon eo Ewōr len

Jikin Bout ko

Iomwin joñoul (10) raan in bijnej ko mokta jen im ekoba kajojo Raan in Ekelel, ribout ro remaron lelok juon polot ilo juon Jikin Vote. Ilo ien in, kajojo armij ro rejañin de kadeloñ ettaer in bout remaron kadeloñ ettaer ñan bout innem bout.

Lale laajrakin etan Jikin Bout ko im raan ko emōj lelok Enaj wōr jikin lelok bout ilo Jejjetin Raan in Ekelel eo

Aoleb ribout ro emōj kadeloñ ettaer ñan bout ilo City & County of Honolulu remaron bout ilo jabdewōt jikin, jekdoñ jikin eo imōn bulijmaan ej bōk eddon.

Ñan kōlaajrak madmōdin bout eo, jouj im ememej in boktok juon I.D. ñan Jikin Bout eo.



Peba in I.D. ko remelim ekoba:

- Laijen in kattōr jen state;
- ID kaat jen state;
- I.D. in Tarinae an Amedka;
- Passport eo ej Jerbal; ak

Juon muri in jarom an tōrre in, peba in akkoun jen paan, jek jen kien, peba jen kien, ak juon jek in kolla ej kwalok etam im atorej eo am ilo ien in

Ilo ien am tōbar ilo Jikin Bout eo, kim maron ba kwōn kadedelok juon peba in bar kadeloñ etam elañe aikuj.

Ñe ejellok am kein kalikar wōn kwe ejimwe, kim maron kajitōk melele ko relablok ñan am kamool woñ kwe. Madmōdin enaj bōk lablok in ien.

Jikin Lelok ko

Ribout ro remaron boklok polot ko aer ilo jikin pok in lelok polot ko emōj kalikar im renaj bellok ilo ak iturin raan eo kein kajoñoul ruwalitōk mokta jen, im ejab rumijlok jen 7:00 awa jota ilo Raan in Ekelele. Lale laajrakin etan jikin Lelok Peba im raan ko emōj lelok.

Kaareelel

Ekkar ñan Hawaii Revised Statute (Kakien ko Emōj Kōkkāal Melele an Hawaii) §11-132, iloan jikin eo emōj kalikar kin rubki ne jen jikin jabdewōt jikin bout, jikin lelok, im jikin ko jet, an walok ak ajej peba in melele, kakōlle, ak melele ko jet an ro rej kareelel ñan aer kabōk ribout ak kwalok aer jab errā ibben jabdewōt armij ak pade in kien ak jikin kajitōk ko ilo polot eo enaj mo.

An Rivote Maron Lelok Bout

Armij ewōr aer utamwe ilo enbwin remaron naj etal ñan Jikin Bout ko ak lelok bout ko aer ilo wāween kōmadmōd ko jet. Jikin Bout ko rej kōjermal kein jermal kapeel in raan kein ñan bout ñan kotlok an ribout ro ewōr jet kain aer utamwe make lelok bout ko aer.

Jabdewōt ribout eo aikuj jibañ ñan vote kin utamwe in enbwin, lolakijen, ak roñjak, ak an jab maron riit ak jeje remaron lelok jibañ ñane jen armij eo ribout eo enaj kelet –im ejab jikin jermal eo an ribout eo, juon rikōmadmōd an jikin jermal eo, ak rikōmadmōd jen doulul eo an ribout eo (42 U.S.C. 1973aa-6). **Opij eo an City Clerk, TTY – 808-768-3848 (Ejellok uwaak in kall ilo kenono ilo nomba in)**



Kōjella im Kaanjel ko an Ribout

Kōjella ñan Ribout ro

Ñe ejejet an deloñ etam ñan vote, renaj mael ae waj juon kaat ialo inKōjella in Kadelon Etan Ribout ilo allon in Ebrol ilo yiō in ekelel eo. Ewōr ien aer bar maele kaat eo ñan ro rej kab kadeloñ ettaer im ribout ro rar bar kadeloñ ettaer iloan yiō in ekelel eo. Ewōr ien an kaat eo bar mael ñan ro rej kab kadeloñ ettaer im ribout ro rej bar kadeloñ ettaer iloan yiō in ekelel eo.

Kaanjel an Deloñ Etan Ribout

Ñe ejako am kōnaan juon ribout eo emōj kadeloñ etan, kwōmaron make kaanjele an deloñ etam ñan bout. Kwōmaron bar kaanjel an deloñ etan ribout kin juon nukcum eo emōj an mij. Kwōmaron lelok peba in kaanjel eo nan Opij eo an City Clerk. Kim ej kamoolol an itōk melele ko rej jibañ amim kejbarok an kōkkāal laajrakin etan ribout. Link ñan Kaanjel an Deloñ Etan Ribout



Kajitōk ko Rekut

Kajitōk ko Rekut – Karool juon Polot in Bout

Q: Raan ta eo aliktata ñan karool polot in bout eo aō?

A: Kakien eo an state ej aikuj aer loe polot in bout ko mokta jen 7:00 awa jota (HST) ilo Raan in Ekeelel eo ñan aer bwinne.

Q: Ta ko jet imaron kōmmāne ñan karool polot eo aō ilo mael?

A: Kwōmaron boklok polot eo am emōj am bout ie ñan jabdewōt Jikin Bout ak Jikin Lelok elañe renaj loe ilo raan eo aliktata emōj kalikar ijin loñ.

Q: Ewi wāween aō kajimwe juon bod ilo polot eo aō ak ibben kilin letā in karool polot eo aō?

A: Jouj im kebaak opij eo amim ilo 808-768-3800 ñan kōmelele ko relablok.

Kajitōk ko Rekut – Kadeloñ Etan Ribout

Q: Ij ke aikuj kadeloñ etta ñan aō maron bout?

A: Aet. Ej mennin aikuj ñan an ribout ro rekāāl kadeloñ ettaer nan bout.

Q: Etke ij aikuj bar kadeloñ etta ñan bout?

A: Kwōj aikuj bar kadeloñ etam elañe atorej in imōn jokwe ak mael eo am emōj an oktak, ak elañe emōj an oktak etam.

Q: Ta raan eo aliktata ñan kadeloñ etan ribout?

A: Kwōmaron kadeloñ etam ñan bout lok ñan raan eo kein10 mokta jen ien ekeelel eo. Peba in ablikajon in kadeloñ etan ribout rej aikuj jitaam jen jikin mael eo ak rej aikuj loe mokta jen raan eo aliktata.

Q: Ta mennin aikuj ko ñan kadeloñ etan armij ñan bout?

A: Armij ro rej kadeloñ ettaer rej aikuj Citizen in Amedka, juon eo ej jokwe Hawaii, im jab diklok jen 16 aer yiō (kadeloñ ettaer moktalok).

Q: Ewi wāween aō lale elañe emōj kadeloñ etta ñan bout?

A: Kōjella ñan Ribout im Kaat in Mael ko rej Kamool Atorej (kaat ialo) renaj mael ilo Ebrol ilo yiō in ekeelel eo. Ejimwe an deloñ etam ñan bout elañe kwōnaj loe kaat in mael in. Kwōmaron bar kall ae lok Opij eo ej bōk eddon Ekeelel ilo 808-768-3800 ñan kamool.

Q: Aikuj ke atorej in imōn jokwe ñan kadeloñ etan ribout? Ak ñe ejellok aō atorej?

A: Ne ejellok am atorej in imōn jokwe, aikuj juon kōmelele eo emmon kin jikin eo kwōj ie. Mennin enaj kōmman bwe rijerbal ro rej lale ekeelel ko en jimwe aer lelok kwe ñan bukon in bout eo am ejimwe.

Q: Imaron ke naj bout elañe ewōr ruo in ruprup kakien?

A: Juon ribout eo emōj loe ewōr ruon in ruprup kakien, jen ien eo rar kwalok kaje eo an armij eo mae ien eo aliktata an jemlok kaje eo, emaron jab bout ilo juon ien ekeelel. Bōtab, elane renaj likūt juon armij ilo burobajen ak armij eo enaj parole alikin aer lelok ñan jikin kalbuj, armij eo emaron kadeloñ etan im bout ilo ien burobajen ak parole eo an.



Kajitōk ko Rekūt – Bout in Absentee

Q: Ak ñe inaj jako jen ien ekeel eo?

A: Kōjērbal Ablikajon eo an ewōr “len” elañe kwōnaj jako jen mweo imōm ilo ien ekeel eo. Polot eo am enaj mael ñan atorej eo an jidik ien kwar lelok.

Q: Ij ke aikuj kateruru ñan juon polot in absentee ñan kajojo ien ekeel?

A: Kwōmaron kajitōk juon polot in absentee, mael ñan atorej ko rejenolok elañe aikuj, ñan ekeel eo Jinoin im Elab ilo juon wōt ien.



Melele in Kebaak Honolulu Elections Divisions (Opij eo ej bōk eddon Ekeel ko ilo Honolulu)

Contact Us

Opij eo an Honolulu ej bōk eddon Ekeel ko (Honolulu Elections Division) ebed ilo:

Honolulu Hale, City Hall
Opij eo an City Clerk
530 S. King St, 100
Honolulu, Hawaii 96813

Awa ko a Opij eo: 7:45 awa jibon ñan 4:30 awa alikin raelab Mande-Bolaide, ijellok raan in holiday ko an State.

Talebon eo an Honolulu Elections Division (Opij eo ej bōk eddon Ekeel ko ilo Honolulu):
(808) 768-3800

TTY eo an Honolulu Elections Division (ñan ro ewōr aer utamwe ikijen roñjak ak kenono):
(808) 768-3848



Laajrakin Etan Jikin Bout ko

Awa ko Rebellok

Jikin ko

Ekelel eo Kein Kajuon

Juļae 29, 2024 mae Okwoj 9, 2024

Mande ñan Jadede

8:00 awa jibbon ñan 4:30 awa alikin raelap

Okwoj 10, 2024

7:00 a.m. to 7:00 p.m.

Ekelel eo Ekka

Oktoba 22, 2024 mae Nobõm̃ba 7, 2024

Mande ñan Jadede

8:00 awa jibbon ñan 4:30 awa alikin raelap

Nobomba 5, 2024

7:00 a.m. to 7:00 p.m.

Honolulu Hale Courtyard

530 South King Street

Honolulu, HI 96813

Kapolei Hale Conference Rooms

1000 Uluohia Street

Kapolei, HI 96707

Ekelel eo Kein Kajuon

Juļae 29, 2024 ñan Okwoj 2, 2024

Mande ñan Bolaide

11:00 awa jibbon mae 6:30 awa jota

Ekelel eo Ekka

Oktoba 22, 2024 mae Oktoba 26, 2024

Tuje ñan Jadede

11:00 awa jibbon mae 6:30 awa jota

Kaneohe District Park (Ruum in Kwelok)

45-660 Keahala Road

Kaneohe, HI 96744

Ekelel eo Kein Kajuon

Okwoj 5, 2024 ñan Okwoj 9, 2024

Mande ñan Bolaide

11:00 awa jibbon mae 6:30 awa jota

Ekelel eo Ekka

Oktoba 29, 2024 mae Nobõm̃ba 2, 2024

Tuje ñan Jadede

11:00 awa jibbon mae 6:30 awa jota

George Fred Wright Wahiawa District Park

(Ceramic Room)

1129 Kilani Avenue

Wahiawa, HI 96786



Laajrakin Jikin ko ñan am Lelok

Awa ko Rebellok

Ekelel eo Kein Kajuon

Bellok aoleb raan jen Julae 23, 2024 mae 7:00 awa jota ilo Okwoj 10, 2024

Ekelel eo Ekka

Bellok aoleb raan jen Oktoba 18, 2024 mae 7:00 awa jota ilo Nobomba 5, 2024

Jikin ko

Waianae District Park
85-601 Farrington Highway
Waianae, HI 96792

Asing Community Park
91-1450 Renton Road
Ewa Beach, HI 96706

Bill Balfour Jr. Waipahu
District Park
94-230 Paiwa Street
Waipahu, HI 96797

Mililani Park and Ride
95-1101 Ukuwai Street
Mililani, HI 96789

Neal Blaisdell Park
98-319 Kamehameha
Highway
Aiea, HI 96701

Connie Chun Aliamanu
Neighborhood Park
4259 Lawehana Street
Honolulu, HI 96818

Kalihi Valley District Park
1911 Kamehameha IV Road
Honolulu, HI 96819

Sunset Beach
Recreation Center
59-540 Kamehameha
Highway
Haleiwa, HI 96712

Kaneohe District Park
45-660 Keaahala Road
Kaneohe, HI 96744

Kailua District Park
21 South Kainalu Drive
Kailua, HI 96734

Hawaii Kai Park and Ride
240 Keahole Street
Honolulu, HI 96825

Waialae Iki
Neighborhood Park
4888 Analii Street
Honolulu, HI 96821

Kanewai Community Park
2695 Dole Street
Honolulu, HI 96822



Laajrakin Jikin ko ñan am Lelok (woñmaanlok)

Awa ko Rebellok

Jikin ko

Ekelel eo Kein Kajuon

Bellok aoleb raan jen Julae 23, 2024 mae 7:00 awa jota
ilo Okwoj 10, 2024

Honolulu Hale
530 South King Street
Honolulu, HI 96813

Ekelel eo Ekka

Bellok aoleb raan jen Oktoba 18, 2022 mae 7:00 awa jota
ilo Nobomba 5, 2022.

Kapolei Hale
1000 Uluohia Street
Kapolei, HI 96707



Peba in Kanne Ablikajon ñan Bout (Melele in Kajinet kin Ukok)

English

Marshallese

Registration online at elections.hawaii.gov

Kadeloñ etam online ilo elections.hawaii.gov

Do you meet these qualifications:

Kwar ke tōbare mennin aikuj kein:

Are you a citizen of the United States of America?

Kwōj ke juon citizen in Amedka?

Are you at least 16 years of age? (Must be 18 to vote)

Ejab ke diklok jen 16 am yiō? (Aikuj 18 am yiō ñan bout)

1

Are you a resident of the State of Hawaii?

Kwōj ke juon eo ej jokwe ilo State eo an Hawaii?

If you answered “No” to any of the above, DO NOT complete the form.

Ñe kwar uwaak “Jab” ñan jabdewōt melele ko ijin loñ, JAB kadedelok peba in.

The residence stated in this affidavit is not simply because of my presence in the State, but was acquired with the intent to make Hawaii my legal residence with all the accompanying obligations therein.

Jikin jokwe eo emōj kwalok ilo kamool in ejab kin aō bed ilo State in, bōtab ej kin aō kōnaan bwe Hawaii jen jikin jokwe eo aō iomwin kakien kin aoleben eddo ko aō laajrak ijin.

2

Last Name

Etan Last Name

First Name

Etan First Name

Middle Initial (M.I.)

Inijol in Middle Name

Suffix (Jr, II)

Kakōlle in Etan (Jr., II)

3

HI Driver License or HI State ID Number (if you do not have either, complete box 3b)

Laijen in Kattōr in HI ak Nomba in ID in State eo an HI (elañe ejellok men kein jimor, kadedelok bok 3b)

3B

I do not have a HI Driver License, HI State ID, or SSN

Ejellok aō Laijen in Kattōr in Hawaii, ID in State in Hawaii, ak SSN

4

Date of Birth

Raan in Lotak

Phone Number

Nomba in Talebon

Email

Email



English

Marshallese

5

If you are disabled and unable to read standard print, would you like to receive an electronic ballot?

Yes, I am disabled and unable to read standard print and would like to request an electronic ballot to be sent to my email indicated on this application

Applicant must provide an email address to receive an electronic ballot.

Ñe enaj wor am utamwe im kwōjab maron riit jeje ko ekkā joñaer, kwōkōnaaan ke loe juon polot ilo kombuitor?

Aet, ewōr aō utamwe ak kwōjab maron riit jeje ko ekkā joñaer im kwōnaaan kajitōk aer jilkinwaj juon polot ilo kombuitor ñan email eo kwar kalikar ilo ablikajon in.

Armij eo ej kateruru aikuj lelok juon atorej in email ñan an loe polot eo ilo kombuitor.

6

Residence Address (P.O. Box, R.R., S.R., are not acceptable)

Mailing Address in Hawaii

Same as Residence Address

Apt. Number

City

Zip Code

If your residence does not have a street address, describe the location (cross streets, landmarks).

Atorej in Imōn Jokwe (P.O. Box, R.R., S.R., rejab melim)

Atorej in Mael ilo Hawaii

Einwōt Atorej eo an Imōn Jokwe

Apt. Nomba

City

Zip Code

Ñe jikin jokwe eo am ejellok an atorej in ial, kōmelele jikin eo (cross etan ial ko, ta ko iturin).

7

Are you registered to vote in another state?

Yes, I hereby authorize cancellation of my previous registration at the following address, county, state, and zip code.

Emōj ke kadeloñ etam ñan bout ilo bar juon state?

Aet, ij kōmelim ijin an kaanjel kadeloñ etta eo moktalok ilo atorej, bukon, state im, zip code eo laajrak.



English

Marshallese

8

Warning: Any person who knowingly furnishes false information may be guilty of a Class C felony.

I hereby swear (or affirm) that all information furnished on this application is true and correct.

If you are unable to sign, mark the signature line and have a witness provide their signature, address and phone number.

Sign Here

Date

Kōjella: Jabdewōt armij eo ejelā an lelok melele ko rejab mool emaron naj wōr ruen kin juon Class C felony (ruprup in kakien kilaa C).

Ij kamllimur (ak kamool) ke aoleb melele ko emōj lelok ilo ablikajon in remool im jimwe.

Ñe kwōjab maron jain, kakōlle lain in jain eo im lolorjak an juon rikamool jaini etan, im lelok atorej im nomba in talebon eo an.

Jain Ijin

Raan

Office Use Only

ID Number

Location Code

Document Number

Notice: The identity of the voter registration agency through which any voter was registered shall not be publicly disclosed. A person's declination to register to vote is also confidential and is used for voter registration purposes only (National Voter Registration Act of 1993).

Ñan an Opij eo Kōjerbale Wot

Nomba in ID

Kakōlle an Jikin

Nomba in Peba

Kōjella: Kamool eo kin opij in kadeloñ etan ribout kin jabdewōt etan ribout eo emōj kadeloñ etan ebañ walok ñan aoleb armij. An juon armij makoko in kadeloñ etan ñan bout ejab bar ajeeded im enaj jermal wōt ñan kadeloñ etan ribout (National Voter Registration Act of 1993 (Kakien eo an Aoleben Aelon eo ikijen Kadeloñ Etan Ribout an 1993)).

Hawaii Voter Registration Application

Please print clearly in black ink.

Register online at elections.hawaii.gov

1 Do you meet these qualifications:

Are you a citizen of the United States of America?	<input type="checkbox"/> Yes	<input type="checkbox"/> No
Are you at least 16 years of age? (Must be 18 to vote)	<input type="checkbox"/> Yes	<input type="checkbox"/> No
Are you a resident of the State of Hawaii?	<input type="checkbox"/> Yes	<input type="checkbox"/> No

If you answered "No" to any of the above, DO NOT complete this form.

The residence stated in this affidavit is not simply because of my presence in the State, but was acquired with the intent to make Hawaii my legal residence with all the accompanying obligations therein.

2

Last Name	First Name	M.I.	Suffix (Jr., II)
-----------	------------	------	------------------

3

HI Driver License or HI State ID Number
If you do not have either, complete box 3b.

3b

<input type="checkbox"/> I do not have a HI Driver License or HI State ID Provide the last 4 digits of your Social Security Number.	<input type="text"/>	<input type="text"/>	<input type="text"/>	<input type="text"/>
<input type="checkbox"/> I do not have a HI Driver License, HI State ID, or SSN				

4

Date of Birth	Phone Number	Email
---------------	--------------	-------

5

If you are disabled and unable to read standard print, would you like to receive an electronic ballot?

Yes. I am disabled and unable to read standard print and would like to request an electronic ballot be sent to my email indicated on this application. **Applicant must provide an email address to receive an electronic ballot.**

6

Residence Address (P.O. Box, R.R., S.R., are <u>not</u> acceptable)	Apt. Number	City	Zip Code
Mailing Address in Hawaii <input type="checkbox"/> Same as Residence Address	Apt. Number	City	Zip Code

If your residence does not have a street address, describe the location (cross streets, landmarks).

7

Are you registered to vote in another state? Yes. I hereby authorize cancellation of my previous registration at the following address, county, state, and zip code.

Warning: Any person who knowingly furnishes false information may be guilty of a Class C felony.
I hereby swear (or affirm) that all information furnished on this application is true and correct.

8

SIGN HERE ▶

<div style="border: 1px solid black; height: 80px; width: 100%;"></div>	Date
---	------

If you are unable to sign, mark the signature line and have a witness provide their signature, address, and phone number.

OFFICE USE ONLY	ID Number	Location Code CC22	Document Number	
------------------------	-----------	------------------------------	-----------------	---

Notice: The identity of the voter registration agency through which any voter was registered shall not be publicly disclosed. A person's declination to register to vote is also confidential and is used for voter registration purposes only (National Voter Registration Act of 1993).



Hawaii Votes by Mail

All registered voters will be automatically sent a ballot to their mailing address in Hawaii associated with their voter registration.

First time Voter Mailing this Application

If you are registering to vote for the first time in the State of Hawaii, mailing this application, and do not have a Hawaii Driver License, Hawaii State ID, or the last 4-digits of your Social Security Number, you are required to provide proof of identification. Proof of identification includes a copy of:

- A current and valid photo identification; or
- A current utility bill, bank statement, government check, paycheck, or other government document that shows your name and address.

Submitting Your Application

County of Hawaii	County of Kauai
25 Aupuni St. #1502 Hilo, HI 96720	4386 Rice St. #101 Lihue, HI 96766
County of Maui	City & County of Honolulu
200 S. High St. Wailuku, HI 96793	530 S. King St. #100 Honolulu, HI 96813

Language Assistance

Para kadagiti naipatarus a materiales a mainaig iti eleksion wenno tulong iti lengguahe tapno makompletoyo daytoy nga aplikasion, awagan ti Opisina Dagiti Eleksion (**Office of Elections**).

Para sa mga isinalin na babasahin tungkol sa eleksyon o upang makatanggap ng tulong sa wika sa pagkumpleto ng aplikasyon na ito, makipag-ugnayan sa Tanggapan ng mga Eleksyon (**Office of Elections**).

若想獲得電子檔的翻譯材料，或者需要協助填表事宜，請聯繫選舉辦公室 (**Office of Elections**)。

Contact Us

For information about registering to vote, contact your **County Elections Division**.

County of Hawaii (808) 961-8277
County of Maui..... (808) 270-7749
County of Kauai..... (808) 241-4800
City & County of Honolulu.. (808) 768-3800

For additional voting information, contact the **Office of Elections**.

Phone: (808) 453-VOTE (8683)
Toll Free: 1-800-442-VOTE (8683)

 **TTY:** (808) 453-6150
Toll Free TTY: 1-800-345-5915

Email: elections@hawaii.gov
Website: elections.hawaii.gov

Voter Registration Application

This application can be used for:

- First time registration
- Name change
- Address change
- Signature update





Peba in Ablikajon ñan Absentee an Hawaii (Melele in Kajinet kin Ukok)

Jekjon	English	Marshallese
	<p>This application will authorize your ballot to be mailed to a temporary alternate address and will be valid only for the election year in which it was submitted.</p> <p>Please print clearly in black ink.</p>	<p>Ablikajon in enaj kōmelim an polot eo am mael ñan bar juon atorej oktak an jidik ien im enaj jermal wōt ñan yiō in ekelel eo ilo ien eo kwar lelok.</p> <p>Jouj im kalikar am jeje kin pen kalor kilmej.</p>
1	<p>I am requesting an absentee ballot for the following election(s):</p> <p>Primary Only</p> <p>General Only</p> <p>Primary & General</p> <p>Special</p>	<p>Ij kajitōk juon polot in absentee ñan ien ekelel eo/ko laajrak:</p> <p>Ekelel eo Wōt an Pade</p> <p>Ekelel eo Wōt Elab</p> <p>Ekelel eo an Pade im Elab</p> <p>Ejenolok</p>
2	<p>Last Name</p> <p>First Name</p> <p>M.I.</p> <p>Suffix (Jr., II)</p>	<p>Etan Last Name</p> <p>Etan First Name</p> <p>Inijol in Etan Middle Name.</p> <p>Kakōlle in Etan (Jr., II)</p>
3	<p>HI Driver License or HI State ID Number (if you do not have either, complete box 3b)</p>	<p>Laijen in Kattōr in HI ak Nomba in ID an State eo an Hawaii (elañe ejellok am aoleben men kein, kadedelok bok 3b)</p>
3B	<p>I do not have a HI Driver License or HI State ID</p> <p>Provide the last 4 digits of your Social Security Number</p> <p>I do not have a HI Driver License, HI State ID, or SSN</p>	<p>Ejellok aō Laijen in Kattōr in HI ak ID an State eo an Hawaii</p> <p>Lelok nomba ko 4 aliktata ilo Nomba in Social Security eo am</p> <p>Ejellok aō Laijen in Kattōr in HI ak ID an State eo an Hawaii, ak SSN</p>
4	<p>Date of Birth</p> <p>Phone Number</p> <p>Email</p>	<p>Raan in Lotak</p> <p>Nomba in Talebon</p> <p>Email</p>



Jekjon	English	Marshallese
5	<p>If you are disabled and unable to read standard print, would you like to receive an electronic ballot?</p> <p>Yes, I am disabled and unable to read standard print and would like to request an electronic ballot to be sent to my email indicated on this application</p>	<p>Ñe ewōr am utamwe ak kwōjab maron riit jeje ko ekkā joñaer, kwōkōnaan ke loe polot eo am ilo kombuitor?</p> <p>Aet, ewōr aō utamwe im ijab maron riit jeje ko ekkā joñaer im ikōnaan kajitōk aer jilkintōk juon polot ilo kombuitor ñan email eo aō iar kalikar ilo ablikajon in</p>
	<p>Applicant must provide an email address to receive an electronic ballot.</p>	<p>Armij eo ej kateruru aikuj letok juon atorej in email ñan loe polot eo ilo kombuitor.</p>
6	<p>Residence Address (P.O. Box, R.R., S.R., are not acceptable)</p> <p>Mailing Address in Hawaii</p> <p>Same as Residence Address</p> <p>Apt. Number</p> <p>City</p> <p>Zip Code</p> <p>If your residence does not have a street address, describe the location (cross streets, landmarks).</p>	<p>Atorej in Imōn Jokwe (P.O. Box, R.R., S.R., rejab melim)</p> <p>Atorej in Mael ilo Hawaii</p> <p>Einwōt Atorej eo an Imōn Jokwe</p> <p>Apt. Nomba</p> <p>City</p> <p>Zip Code</p> <p>Ñe jikin jokwe eo am ejellok an atorej in ial, kōmelele jikin eo (cross etan ial ko, ta ko iturin).</p>
7	<p>Address to Mail Primary Ballot</p> <p>Hold for arrival</p> <p>Address to Mail General Ballot</p> <p>Hold for arrival</p>	<p>Atorej ñan Mael ae Polot eo an Ekeel eo an Pade</p> <p>Dābiji ñan am tōbar</p> <p>Atorej ñan Mael Polot eo an Ekeel eo Elab</p> <p>Dābiji ñan am tōbar</p>



Jekjon	English	Marshallese
--------	---------	-------------

8

Warning: Any person who knowingly furnishes false information may be guilty of a Class C felony.

Kōjella: Jabdewōt armij eo ejelā an lelok melele ko rejab mool emaron naj wōr ruen kin juon Class C felony (ruprup in kakien kilaa C).

I hereby swear (or affirm) that all information furnished on this application is true and correct.

Ij kallimur (ak kamool) ke aoleb melele ko emōj lelok ilo ablikajon in remool im jimwe.

If you are unable to sign, mark the signature line and have a witness provide their signature, address and phone number.

Ñe kwōjab maron jain, kakōlle lain in jain eo im lolorjak an juon rikamool jaini etan, im lelok atorej im nomba in talebon eo an.

Sign Here

Jain Ijin

Date

Raan

Office Use Only

Ñan an Opij eo Kōjerbale Wot

Primary Mailed

Emōj an Mael Ekelel eo an Pade

Primary Received

Emōj Loe Ekelel eo an Pade

Remarks

Enaan ko

General Mailed

Emōj an Mael Ekelel eo Elab

General Received

Emōj Loe Ekelel eo Elab

D/P

D/P

Document Number

Nomba in Peba

Notice: The identity of the voter registration agency through which any voter was registered shall not be publicly disclosed. A person's declination to register to vote is also confidential and is used for voter registration purposes only (National Voter Registration Act of 1993).

Kōjella: An walok opij eo ñan kadeloñ etan ribout im jabdewōt ribout emōj an kadeloñ etan eban ajeeded. An juon armij makoko in kadeloñ etan ñan bout ejab bar ajeeded im enaj jerbale wōt ñan kadeloñ etan ribout (National Voter Registration Act of 1993 (Kakien eo an Aoleben Aelon eo ikijen Kadeloñ Etan Ribout an 1993)).

Hawaii Absentee Ballot Application

This application will authorize your ballot to be mailed to a temporary alternate address and will be valid only for the election year in which it was submitted.

Please print clearly in black ink.

1 I am requesting an absentee ballot for the following election(s):
 Primary Only General Only Primary & General Special

2 Last Name _____ First Name _____ M.I. _____ Suffix (Jr., II) _____

3 HI Driver License or HI State ID Number
If you do not have either, complete box 3b.

3b I do not have a HI Driver License or HI State ID
Provide the last 4 digits of your Social Security Number. [][][][]

I do not have a HI Driver License, HI State ID, or SSN

4 Date of Birth _____ Phone Number _____ Email _____

5 If you are disabled and unable to read standard print, would you like to receive an electronic ballot?
 Yes. I am disabled and unable to read standard print and would like to request an electronic ballot be sent to my email indicated on this application. **Applicant must provide an email address to receive an electronic ballot.**

6 Residence Address (P.O. Box, R.R., S.R., are not acceptable) _____ Apt. Number _____ City _____ Zip Code _____

Mailing Address in Hawaii Same as Residence Address Apt. Number _____ City _____ Zip Code _____

If your residence does not have a street address, describe the location (cross streets, landmarks).

7 Address to Mail Primary Ballot Hold for arrival Address to Mail General Ballot Hold for arrival

Warning: Any person who knowingly furnishes false information may be guilty of a Class C felony.

I hereby swear (or affirm) that all information furnished on this application is true and correct.

8 **SIGN HERE** ▶ _____ Date _____

If you are unable to sign, mark the signature line and have a witness provide their signature, address, and phone number.

OFFICE USE ONLY	Primary Mailed	Primary Received	Remarks		<input type="checkbox"/> HRS §11-20
	General Mailed	General Received	Clerk	D/P	Document Number



Notice: The identity of the voter registration agency through which any voter was registered shall not be publicly disclosed. A person's declination to register to vote is also confidential and is used for voter registration purposes only (National Voter Registration Act of 1993).

Notice

You must be registered to vote in Hawaii to receive an absentee ballot. Confirm your voter registration or register to vote online at elections.hawaii.gov.

You may also submit a Voter Registration Application.

Submitting Your Application

County of Hawaii **County of Kauai**
25 Aupuni St. #1502 4386 Rice St. #101
Hilo, HI 96720 Lihue, HI 96766

County of Maui **City & County of Honolulu**
200 S. High St. 530 S. King St. #100
Wailuku, HI 96793 Honolulu, HI 96813

Deadline to Submit Application

Applications must be received by your County Elections Division no later than **7 days before Election Day**.

Language Assistance

Para kadagiti naipatarus a materiales a mainaig iti eleksion wenno tulong iti lengguahe tapno makompletoyo daytoy nga aplikasion, awagan ti Opisina Dagiti Eleksion (**Office of Elections**).

Para sa mga isinalin na babasahin tungkol sa eleksyon o upang makatanggap ng tulong sa wika sa pagkumpleto ng aplikasyon na ito, makipag-ugnayan sa Tanggapan ng mga Eleksyon (**Office of Elections**).

若想獲得電子檔的翻譯材料，或者需要協助填表事宜，請聯繫選舉辦公室 (**Office of Elections**)。

Contact Us

For information about registering to vote, contact your **County Elections Division**.

County of Hawaii..... (808) 961-8277
County of Maui..... (808) 270-7749
County of Kauai..... (808) 241-4800
City & County of Honolulu.. (808) 768-3800

For additional voting information, contact the **Office of Elections**.

Phone: (808) 453-VOTE (8683)
Toll Free: 1-800-442-VOTE (8683)

 **TTY:** (808) 453-6150
Toll Free TTY: 1-800-345-5915

Email: elections@hawaii.gov
Website: elections.hawaii.gov

Absentee Ballot Application

You must be registered to vote in Hawaii to receive an absentee ballot.

This application will authorize your ballot to be mailed to a temporary alternate address and will be valid only for the election year in which it was submitted.





Ablikajon ñan Polot ilo am Jede Lok (Melele in Kajinet kin Ukok)

Jekjon	English	Marshallese
	Please print clearly in black ink.	Jouj im kalikar am jeje kin pen kalor kilmej.
	I hereby swear (or affirm) that the following information is true and correct:	Ij kallimur (ak kamool) ke aoleb melele ko emōj lelok ilo ablikajon in remool im jimwe:
	Office Use Only Voter ID No.	Ñan an Opij eo Kōjerbale Wōt Nomba in ID eo an Ribout
1	HI Driver's License Number	Nomba in Laijen in Kattōr an HI
	HI State ID Number	Nomba in ID an State eo an HI
	Social Security Number's last 4-digits	Nomba ko 4 aliktata ilo Nomba in Social Security
2	Date of Birth (mm/dd/yy)	Raan in Lotak (allon/raan/yiō)
3	Last Name	Etan Last Name
	First Name	Etan First Name
	M.I.	Inijol in Etan Middle Name
4	Residence Address (Must be completed. P.O. Box, R.R., S.R., are not acceptable)	Atorej in Imōn Jokwe (Aikuj dedelok. P.O. Box, R.R., S.R., rejab melim)
	Apt. Number	Apt. Nomba
	City/Town	City/Town
	Zip Code	Zip Code
5	Mailing Address in Hawaii (Street address or PO Box)	Atorej in Mael ilo Hawaii (Atorej in etan ial ak PO Box)
	Same as Residence Address	Einwōt Atorej in Imōn Jokwe
	City/Town	City/Town
	Zip Code	Zip Code



Jekjon	English	Marshallese
6	<p>If no street address, describe location of residence (Leave blank if #4 is completed).</p> <p>City/Town</p> <p>Zip Code</p>	<p>Ñe ejellok atorej in etal ial eo, kōmelele kin jikin imōn jokwe eo (En ejellok kobban elañe emōj am kadedelok #4).</p> <p>City/Town</p> <p>Zip Code</p>
	<p>Warning: Any person who knowingly furnishes false information may be guilty of a Class C felony.</p>	<p>Kōjella: Jabdewōt armij eo ejelā an lelok melele ko rejab mool emaron naj wōr ruen kin juon Class C felony (ruprup in kakien kilaa C).</p>
7	<p>Same Day/Election Day Voter Registration Affidavit or Voter Info Update</p> <p>I hereby swear (or affirm) that:</p> <p>For Federal, State, and County Elections:</p>	<p>Peba in Kamool Kadeloñ Etan Ribout ilo Ejjā Raan/Raan in Ekeelel eo ak Melele ko an Ribout Emōj Kōkkāal</p> <p>Ij kallimur (ak kamool) ijin ke:</p> <p>Ñan Ekeelel ko an Federal, State, im Bukon:</p>
A	<p>I am a citizen of the United States of America (Non-U.S. citizens including U.S. nationals do not qualify)</p> <p>Yes / No</p>	<p>Na juon citizen in Amedka (Citizen ro rejab RiAmedka ekoba national ro an Amedka rejab maron tōbrak)</p> <p>Aet / Jab</p>
B	<p>I am at least 16 years of age and I understand that I must be 18 years old by election day to vote</p> <p>Yes / No</p>	<p>Ejab diklok jen 16 aō yiō im imelele ke aikuj jab diklok jen 18 aer yiō mokta jen raan in ekeelel eo ñan bout</p> <p>Aet / Jab</p>
C	<p>I am a resident of the State of Hawaii</p> <p>Yes / No</p>	<p>Na juon eo ej jokwe ilo State eo an Hawaii</p> <p>Aet / Jab</p>
D	<p>I have not and will not vote at any other voter service center for this election, and I have not and will not cast any other ballot for this election: and</p>	<p>Ijañin im ibañ bout ilo jabdewōt bar jikin bout ñan ien ekeelel in, im ijañin im iban lelok jabdewōt polot ñan ekeelel in: im</p>



Jekjon	English	Marshallese
E	<p>I acknowledge that providing false information may result in a class C felony, punishable by a fine not exceeding \$1,000 or imprisonment not exceeding five years, or both.</p> <p>Signature</p> <p>Date</p>	<p>Ijelā ke ilo aō lelok melele ko rejab mool emaron jemlok ilo juon kilaaj C in ruprup kakien, kaje kin juon bakkin ejab lablok jen \$1,000 ñe ejab kalbuj jab lablok jen lalem yiō, ak men kein jimor.</p> <p>Jain in Etan</p> <p>Raan</p>
8	<p>Read and Sign ONLY Upon Receipt of Your Ballot</p> <p>I hereby swear (or affirm) that: 1) I am the person named above: 2) I am requesting an in-person ballot for myself and no other; and 3) all information furnished on this application is true and correct.</p> <p>Signature</p> <p>Date</p>	<p>Riit im Jaini WŌT ilo ien am Loe Polot eo Am</p> <p>Ij kallimur (ak kamool) ijin ke: 1) Na armij eo ebed etan ijin loñ: 2) Ij kajitōk juon polot aō make na wōt inaj boklok; im 3) aoleb melele ko emōj aō lelokio ablikajon in remool im jimwe.</p> <p>Jain in Etan</p> <p>Raan</p>
	<p>If you are unable to sign, mark the signature area and have a witness provide signature, address and phone number below.</p> <p>Witness Signature</p> <p>Date</p> <p>Address</p> <p>Phone No.</p>	<p>Ñe kwōjab maron jaini etam, kakōlle jikin jain eo im lolorjak an juon rikamool lelok jain in etan, atorej, im nombā in talebon eo an ijin lal.</p> <p>Jain in Etan Rikamool</p> <p>Raan</p> <p>Atorej</p> <p>Nombā in Talebon</p>



Jekjon	English	Marshallese
District/Precinct		Bukon/Jikin eo Imōn Bulijmaan ej Bōk Eddon
Clerk		Clerk
For Office Use Only		Ñan an Opij eo Kōjērbal Wōt
Location Code		Kakōlle an Jikin
	<p>Notice: The identity of the voter registration agency through which any voter was registered shall not be publicly disclosed. A person's declination to register to vote is also confidential and is used for voter registration purposes only (National Voter Registration Act of 1993).</p>	<p>Kōjella: Kamool eo kin opij in kadeloñ etan ribout kin jabdewōt etan ribout eo emōj kadeloñ etan ebañ walok ñan aoleb armij. An juon armij makoko in kadeloñ etan ñan bout ejab bar ajeeded im enaj jērbal wōt ñan kadeloñ etan ribout (National Voter Registration Act of 1993 (Kakien eo an Aoleben Aelon eo ikijen Kadeloñ Etan Ribout an 1993)).</p>

Application for In-Person Ballot

Important: Print clearly in dark ink I hereby swear (or affirm) that the following information is true and correct:		<i>Office Use Only</i> Voter ID No.	
1	HI Driver's License Number, HI State ID Number or Social Security Number's last 4-digits	2	Date of Birth (mm/dd/yy)
3	Last Name	First Name	M.I.
4	Residence Address (Must be completed. P.O. Box, R.R., S.R. are not acceptable)	Apt. No.	City/Town Zip
5	Mailing Address in Hawaii (Street address or P.O. Box)		City/Town Zip
6	If no street address, describe location of residence (Leave blank if box #4 is completed)		City/Town Zip

Warning: Any person who knowingly furnishes false information may be guilty of a class C felony.

Same Day / Election Day Voter Registration Affidavit OR Voter Info Update

I hereby swear (or affirm) that:
 For Federal, State, and County Elections:

A. **I am a citizen of the United States of America** YES NO
(Non-U.S.citizens including U.S. nationals do not qualify).

B. **I am at least 16 years of age and I understand that I must be 18 years old by election day to vote** YES NO

C. **I am a resident of the State of Hawaii** YES NO
(The residence stated in this affidavit is not simply because of my presence in the State, but that the residence was acquired with the intent to make Hawaii my legal residence with all the accompanying obligations therein...)

D. **I have not and will not vote at any other polling place for this election, and I have not and will not cast any other ballot for this election; and**

E. **I acknowledge that providing false information may result in a class C felony, punishable by a fine not exceeding \$1,000 or imprisonment not exceeding five years , or both.**

Signature

Date

Read and Sign ONLY Upon Receipt of Your Ballot

I hereby swear (or affirm) that: 1) I am the person named above; 2) I am requesting an in-person ballot for myself and no other; and 3) all information furnished on this application is true and correct.

Signature

Date

If you are unable to sign, mark the signature area and have a witness provide signature, address and phone number below.

Witness Signature _____ Date _____
 Address _____ Phone No. _____

DISTRICT/PRECINCT	CLERK	FOR OFFICE USE ONLY	I.D. No.	VSCH / VSCK / EDRH / EDRK	Location Code	98
-------------------	-------	---------------------	----------	----------------------------------	---------------	-----------



Kajitōk ko Rekut kin Jikin Bout eo:

KADELOÑ ETAN RIBOUT

Aikuj Kadeloñ Etan Ribout ñan ro rej kab tin bout. Ilo ien emōj am kadeloñ etam ñan bout, kwōjab aikuj bar kadeloñ etam ñan kajojo ien ekelel. Kwōj aikuj bar kadeloñ etam wōt ñe emōj am emakūt ak emōj am janiji etaam.

Armij ro rej kadeloñ ettaer rej aikuj Citizen in Amedka, juon eo ej jokwe Hawaii, im jab diklok jen 16 aer yiō (kadeloñ ettaer moktalok). Koba ibben ablikajon eo am, jout im letōk pija ID eo am an tōrre in im ej jermal, passport, ak juon muri in jarom an ien in, peba in kamool kin akkoun ilo paan, jek jen kien, peba jen kien, ak jek in kolla ewōr etam im atorej eo am ilo ien in.

Ilo an wōr raan in jemlok ñan kadeloñ etan ribout ñan raan eo kein 10 mokta jen Raan in Ekelel eo, kwōmaron woñmaanlok in kadeloñ etam jabdewōt ien ilo am Kōjermal Jikin Kadeloñ Etan Ribout Online ak ilo am jede lok ñan Jikin Bout eo.

Kwōmaron kamool am kar kadeloñ etam ñan bout online ilo www.olvr.hawaii.gov ilo am lelok juon Laijen in Kattor in Hawaii ak nomba in ID an State eo an Hawaii, im nomba ko emen aliktata ilo Nomba in Social Security eo am. Kwōmaron bar kebaak opij eo amim ilo (808) 768-3800. Jout im bojak in letōk etam, atorej in imōn jokwe, im raan in lotak eo am ñan kamool jekjek eo kwōj bed ie.

KADELOÑ ETAN RIBOUT – AIKUJ ATOREJ IN IMŌN JOKWE

Bok in P. O. Box im atorej ko an bijnej rejab melim einwōt atorej in imōn jokwe. Ñe ejellok am atorej in imōn jokwe, aikuj juon kōmelele emmon kin jikin eo kwōj jokwe. Aikuj atorej in imōn jokwe ñan lelok bwe rijermal ro an ekelel eo ren lewaj bukon in bout eo am ejimwe.

BOUT ABSENTEE (JAKO JEN MWEO IMŌM)

Kōjermal “Ablikajon eo an len” ñe kwōnaj jako jen mweo imōm ilo ien ekelel eo. Elane aikuj, kwōmaron kajitōk juon polot in absentee, mael ñan atorej ko rejenolok elañe aikuj, ñan ekelel eo Jinoin im Elab ilo juon wōt ien im loloorjak aer mael ñan atorej ko rejenolok. Polot ko emōj bout absentee rej aikuj tōbar mokta jen 7:00 awa jota (HST) ilo Raan in Ekelel eo ñan aer maron bwinni. Ekkar ñan Kakien eo an State, polot in absentee ko renaj loi alikin ien eo reban bwinni.

BOUT ILO – IEN EKEEEL EO JINOIN

State eo an Hawaii ej kōmmene juon Ekelel eo Jinoin an juon pade. Renaj kōmelele bwe kwōn mokta kelet pade in kien eo am mokta jen am woñmaanlok in kōmmene kelet ko am ikijen rikwelok. Ro rej ettōr in rikwelok jen pade in kien enaj laajrak ettaer ilo jikin ko rejenolok ilo polot eo. EJAB melim bout jen eloñ pade ko.

Kememej: Ejellok an Hawaii bebe ñan kelet president ilo ekelel eo an pade.

IEN BOUT – KŌMMAN KAJIMWE ILO POLOT EO AM AK KILIN LETĀ EO

Ne kwōnaj kōmman bōd ilo polot eo am ak kilin letā eo, jout im jab kōjermal teep ak dān mouj ñan kajimwe ak jeje ko ñan kajimwe bōd ko ilo polot eo am. Kall ae opij eo amim ilo (808) 768-3800 ñan juon polot kāāl. Ekkar ñan ien im wāween ko, rijermal ro amim remaron lewaj juon wāween am bōke im emaron aikuj am make jede lok in bōke bar juon peba in polot ak bout ilo juon ian Jikin Bout ko.



IEN BOUT – JIKIN KO AM BOKLOK IM RAAN KO ALIKTATA

Kwōmaron boklok polot in bout eo am ilo jabdewōt Jikin bout ak Jikin am Boklok im rej aikuj loe mokta jen 7:00 awa jota ilo Raan in Ekelel eo. Ñan laajrakin etan jikin im awa in kōmadmōd ko, lale www.honoluluelections.us.

KAAREELEL

Ekkar ñan Hawaii Revised Statute (Kakien ko Emōj Kōkkāāl Melele an Hawaii) §11-132, iloan jikin eo emōj kalikar kin rubki ne jen jikin jabdewōt jikin bout, jikin lelok, im jikin ko jet, an walok ak ajej peba in melele, kakōlle, ak melele ko jet an ro rej kareelel ñan aer kabōk ribout ak kwalok aer jab errā ibben jabdewōt armij ak pade in kien ak jikin kajitōk ko ilo polot eo enaj mo.



Kōmelele ko kin Bout (Melele in Kajinet kin Ukok)

English

Marshallese

Make Your Vote Count

Mark Your Ballot

Completely fill in the box to the left of your choice with a black or blue pen.

If you vote for more candidates than allowed, your votes for that contest will not be counted.

If you make a mistake, contact your County Elections Division for a replacement. Do not use whiteout.

You will not be issued a replacement ballot once your ballot has been received by your County Elections Division

Seal and Sign Your Return Envelope

Re-fold your ballot and place in the ballot secrecy sleeve. The ballot secrecy sleeve keeps your votes anonymous while being processed for counting.

Place the ballot secrecy sleeve in the return envelope.

SIGN and seal the return envelope. Your ballot will not be counted without your signature.

Return Your Ballot

The return envelope is pre-addressed and postage-paid.

Your voted ballot must be received by the County Elections Division by 7:00 pm on Election Day, August 10, 2024.

When dropping your ballot in the mail, send it 3 days prior to Election Day to ensure it is received by the deadline.

Alternatively, places of deposit are established to drop off your voted ballot.

Lolorjak an Bōnōbōn Bout eo Am

Kakōlle Polot eo Am

Lukkun kanne aoleben bok to anmiin kin kelet eo am kin juon pen kalor kilmej ak būlu.

Ñe kwōnaj bout lablok in rikwelok ro rej ettor jen joñan eo emelim, bout ko am reban bōnōbōn ñan ien jiae eo.

Ñe kwōnaj kōmman bōd, kebaak Opij in Ekelel eo an Bukon eo am (County Elections Division) ñan aer bar lewaj juon am polot. Jab kōjērbal kein kajimwe ak ejeer kalor mouj.

Renaj lewaj bar juon am polot ilo ien emōj an Opij eo ej bōk eddon Ekelel ilo Bukon eo am loe polot eo kar am.

Kiil im Jaini Kilin Letā eo in Karooltok eo Am

Bar limi polot eo am im likūt iloan kil eo ej kōbenjak polot eo. Kilin polot eo ej kōbenjak ej kejbarok an bout ko am jab kwalok wōn kwe ilo ien aer madmōd in bōnōbōn.

Likūt kilin polot eo ej kōbenjak melele iloan kilin leta eo.

Jain im kiil kilin letā eo kwōj karool tok. Polot eo am eban bōnōbōn ñe ejellok jain in etam.

Karool Polot eo Am

Kilin letā eo ñan am karool tōk ewor kadede atorej im emōj kolla wonnen am jilkinlok.

Opij eo ej bōk eddon Ekelel ilo Bukon aikuj loe polot eo am emōj am bout ie mokta jen 7:00 awa jota ilo Raan in Ekelel eo.

Ilo ien am boklok polot eo am bwe en mael, jilkinlok 3 raan moktalok jen Raan in Ekelel eo nan lolorjak aer loe mokta jen raan eo aliktata.

Im bareinwōt, jikin ko kwōmaron boklok emōj kajutak 5 raan in bijnej ko moktalok jen Raan in Ekelel ñan am boklok polot in bout eo am.



English

Marshallese

Need Assistance?

You may receive voting assistance from a person of your choice excluding your employer or agent of that employer, agent of your labor union, or a candidate for any office that is listed on the ballot.

Kwōj ke aikuj jibañ?

Kwōmaron loe jibañ in bout eo am jen armij eo kwōnaj kelet ijellokun jikin jermal eo am ak rikōmadmōd eo an bijnej eo am, rikōmadmōd an doulul in jermal eo am, ak juon rijabdōk jea ñan jabdewōt opij ko rej laajrak ettaer ilo polot eo.

Contact your County Elections Division:

County of Hawaii

County of Maui

County of Kauai

City and County of Honolulu

Kebaak Opij eo ej Bōk Eddon Ekelel ilo Bukon eo am:

County eo an Hawaii

County eo an Maui

County eo an Kauai

City im County eo an Honolulu

Go online to:

Confirm your ballot was received

Locate a voter service center or place of deposit

Etal online ñan:

Kamool emōj loe polot eo am

Bukōt juon jikin an ribout bout ak jikin boklok polot in bout eo am

Voting in the Primary Election

Step 1

Select ONE political preference

You MUST select ONE political preference below:

Party 1

Party 2

Party 3

Party 4

Party 5

Nonpartisan Ballot (N)

bout ilo len Ekelel eo an Pade

Bunten 1

Kelet JUON pade in kien

Kwōj AIKUJ kelet JUON pade in kien ijin lal:

Pade 1

Pade 2

Pade 3

Pade 4

Pade 5

Polot Ejellok Pade



English

Marshallese

Step 2

Vote ONLY for the candidates of your selected political preference

U. S. Representative

State Senate

State Representative

Vote for Not More Than One (1)

Candidate 1

Buñten 2

Bout ie WŌT rijibadök jea jen pade in kien eo kwar kelet

U.S. Representative (Rikwelok)

Senator an State

Rikwelok an State

Enjab Lablok Jen Juon Bout (1)

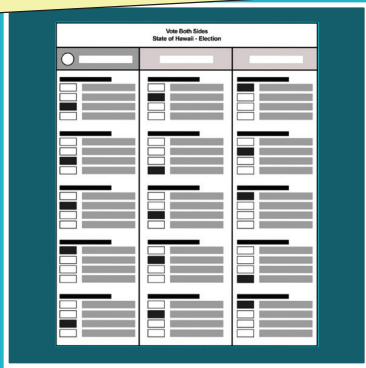
Rijabdök Jea 1

Hawaii conducts a single party Primary Election to nominate the candidates who will represent each party in the General Election.

Everyone may vote in the Office of Hawaiian Affairs and County Contests found on the backside of the ballot.

Hawaii ej kōmmāne juon Ekelel an kajojo Pade ñan kelete rikwelok eo enaj ettōr ñan kajojo pade ko ilo Ekelel eo Elab. Aoleb remaron bout ilo ilo Office of Hawaiian Affairs (Opij eo ej lale aikuj im kōmadmōd ko an RiHawaii) im Jiae ko an Bukon im kwōmaron loi ilo jikin eo itulikin polot eo.

Make Your Vote Count



Mark Your Ballot

Completely fill in the box to the left of your choice with a black or blue pen.

If you vote for more candidates than allowed, your votes for that contest will not be counted.

If you make a mistake, contact your County Elections Division for a replacement ballot. Do not use whiteout.

You will not be issued a replacement ballot once your ballot has been received by your County Elections Division.

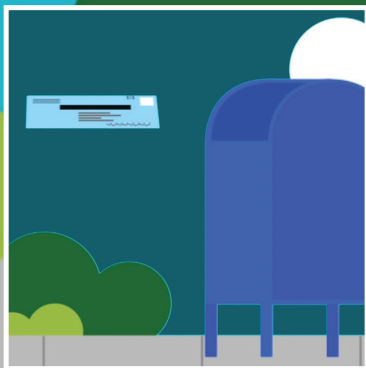


Seal and Sign Your Return Envelope

Re-fold your ballot and place in the ballot secrecy sleeve. The ballot secrecy sleeve keeps your votes anonymous while being processed for counting.

Place the ballot secrecy sleeve in the return envelope.

SIGN and seal the return envelope. Your ballot will not be counted without your signature.



Return Your Ballot

The return envelope is pre-addressed and postage-paid.

Your voted ballot must be received by the County Elections Division by 7:00 pm on Election Day, August 10, 2024.

When dropping your ballot in the mail, send it 3 days prior to Election Day to ensure it is received by the deadline.

Alternatively, places of deposit are established 5 business days prior to Election Day to drop off your voted ballot.

Need Assistance?

You may receive voting assistance from a person of your choice excluding your employer or agent of that employer, agent of your labor union, or a candidate for any office that is listed on the ballot.

Contact your County Elections Division:

County of Hawaii	(808) 961-8277
County of Maui	(808) 270-7749
County of Kauai	(808) 241-4800
City and County of Honolulu	(808) 768-3800

Go online to:


- Confirm your ballot was received
- Locate a voter service center or place of deposit

www.elections.hawaii.gov

Voting in the PRIMARY ELECTION

Step 1

Select ONE political preference

 **Start voting here**

You **MUST** select **ONE** political preference below:

<input type="checkbox"/>	PARTY 1
<input type="checkbox"/>	PARTY 2
<input type="checkbox"/>	PARTY 3
<input type="checkbox"/>	PARTY 4
<input type="checkbox"/>	PARTY 5
<input type="checkbox"/>	NONPARTISAN BALLOT (N)

Instructions

Vote **ONLY** for the candidates of your selected political preference

Party 2

U.S. Representative
Vote For Not More Than One (1)

Candidate 1

State Senate
Vote For Not More Than One (1)

Candidate 1

State Representative
Vote For Not More Than One (1)

Candidate 1

Step 2

Hawaii conducts a single party Primary Election to nominate the candidates who will represent each party in the General Election. Everyone may vote in the Office of Hawaiian Affairs and County Contests found on the backside of the ballot.



Polot ilo Facsimile (Jikin Melele kin Polot eo an 2024 ikijen naan im ukok)

Facsimile Ballot – Glossary of 2024 Ballot Terms and Translation

	English	Marshallese
	Start Voting Here	Jino bout ijin
	You MUST select ONE political party or nonpartisan ballot below.	Kwōj AIKUJ kelet JUON pade in kien ak polot ejellok pade ijin lal
	INSTRUCTIONS	KŌMELELE KO
1	You MUST select ONE political preference from the box above for your votes to count.	Kwōj AIKUJ kelet JUON pade in kein jen bok eo ijin loñ ñan an bōnōbōn bout eo am.
2	Vote ONLY for candidates within your selected preference.	Bout ae WŌT rijibadōk ro rebed ilo pade eo kwar kelet.
	Votes for another political preference will not be counted.	Bout ko jen pade ro jet reban bōnōbōn.
3	You are eligible to vote for ALL of the Office of Hawaiian Affairs and County contests on the back.	Bout ñan Office of Hawaiian Affairs (Opij eo ej lale aikuj im kōmadmōd ko an RiHawaii) im Jiae ko an Bukon im kwōmaron loi ilo jikin eo itulikin polot eo.
	MAKING SELECTIONS	KŌMMAN EKEELEL KO
	Completely fill in the box to the left of your choice with a black or blue pen. Do not use whiteout.	Lukkun kanne aoleben bok eo ilo jikin eo anmiin in kelet eo am kin juon pen kalor kilmej ak būlu. Jab kōjerbal kein ejeer kalor mouj.
	Vote for Not More than One (1)	Enjab Lablok Jen Juon Bout (1)
	Vote for Not More than Three (3)	Enjab Lablok Jen Jilu Bout (3)
	If you vote for more candidates than allowed in a contest, your votes for that contest will not be counted.	Ñe kwōnaj bout lablok jen juon rijibadōk jen joñan eo emelim ilo ien jiae eo, bout eo am ñan ien jiae eo eban bōnōbōn.



English

Marshallese

If you make a mistake, request a replacement ballot at hnlvote.ehawaii.gov or call (808) 768-3800. Do not use whiteout.

Ñe kwōnaj kōmman bōd, kebaak Opij in Ekeel eo an Bukon eo am (County Elections Division) ñan aer bar lewaj juon am polot. Jab kōjērbal kein kajimwe ak ejeer kalor mouj.

GLOSSARY OF 2024 BALLOT TERMS

MELELE IN NAAN KO ILO POLOT KO AN 2024

Precinct – The geographic area that is the basis for determining which contests and issues the votes legally residing in that area are eligible to vote on.

Jikin eo Imōn Bulijmaan ej Bōk Eddon - Jejjetin jikin eo ej ñan lale ta ta ien jiae im abnōnō ko an ribout ro emelim iomwin kakien ñan aer jokwe ie im remaron tōbrak in bout kaki.

Federal Contests – Any primary, general, or special election in which a candidate for Federal office appears on the ballot.

Jiae ko an Federal – Jabdewot ien ekeel an pade, elab, ak ejenolok im rijibadōk eo ej ettōr ñan opij eo an Federal enaj walok ilo polot eo.

U. S. Senator

Rikwelok ñan Senator an Amedka

U. S. Representative

Rikwelok ilo Amedka

State Contests – Contests for members to State Offices, including Governor, Lieutenant Governor, and State Legislative Offices

Jiae ko an state -Jiae ko ñan ro uwaan Opij ko an State, ekoba governor, Lieutenant Governor, im Opij ko an Rikwelok ro an State.

Governor

Governor

Lieutenant Governor

Lieutenant Governor

State Senator

Senator an State

State Representative

Rikwelok an State

Office of Hawaiian Affairs (OHA) – OHA is a public agency responsible for improving the wellbeing of Native Hawaiians.

Office of Hawaiian Affairs (Opij eo ej lale aikuj ko an RiHawaii, OHA) - OHA ej juon opij an kien an eddo kōkmanmanlok ejmour im ainemmon eo an Molin RiHawaii ro. Opij in ej kakien jen juon Doulul in Ritōl ro, kōmman jen ruwatimjuon ro uwaan aoleben state eo emōj kelet bwe ren rikwelok iomwin emen yiō im rej karōke kakien ko an doulul eo.

The agency is governed by a Board of Trustees, made up of nine members who are elected statewide to serve four-year terms and set organization policy.

Hawaii Resident Trustee

Ritōl eo ej jokwe Hawaii



English

Marshallese

Maui Resident Trustee

Ritōl eo ej jokwe Maui

Oahu Resident Trust

Ritōl eo ej jokwe Oahu

At-Large Trustee (3 seats)

Ritōl eo jen Jikin ko Relab (3 jea)

County Contests – Contests for members to County Offices, including Mayor, Prosecuting Attorney, and City Council District Offices

Jiae ko an Bukon – Jiae ko an ro uwaan Opij ko an Bukon, ekoba Mayor, Loar eo ej Kōmman Jumae, im Opij ko an Koonjel eo an City ilo Bukon.

District Councilmember

Armij eo uwaan Koonjel an Bukon

Proposed Amendments to the Honolulu City Charter

Bebe in Kakobaba in Kakien ko ñan Jata eo an City eo an Honolulu

Proposed Amendments to the Hawaii State Constitution

Bebe in Kakobaba in Kakien ñan Jemenei eo an State eo an Hawaii

Start Voting Here

You **MUST** select **ONE** political preference below:

GREEN PARTY (G)

NONPARTISAN BALLOT (N)

CONSTITUTION PARTY (C)

ALOHA AINA PARTY (A)

REPUBLICAN PARTY (R)

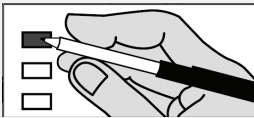
LIBERTARIAN PARTY (L)

DEMOCRATIC PARTY (D)

Instructions

- You **MUST** select **ONE** political preference from the box above for your votes to count.
- Vote **ONLY** for candidates within your selected preference. Votes for another political preference will not be counted.
- You are eligible to vote for **ALL** of the Office of Hawaiian Affairs and County Contests on the back.

Making Selections



Completely fill in the box to the left of your choice with a black or blue pen.

If you vote for more candidates than allowed in a contest, your votes for that contest will not be counted.

If you make a mistake, request a replacement ballot at hnlvote.ehawaii.gov or call (808) 768-3800. Do not use whiteout.

Green Party (G)

U.S. Senator
Vote For Not More Than One (1)

CANDIDATE A

CANDIDATE B

U.S. Representative
Vote For Not More Than One (1)

CANDIDATE A

CANDIDATE B

Governor
Vote For Not More Than One (1)

CANDIDATE A

CANDIDATE B

Lieutenant Governor
Vote For Not More Than One (1)

CANDIDATE A

CANDIDATE B

State Senator
Vote For Not More Than One (1)

CANDIDATE A

CANDIDATE B

State Representative
Vote For Not More Than One (1)

CANDIDATE A

CANDIDATE B

Nonpartisan Ballot (N)

U.S. Senator
Vote For Not More Than One (1)

CANDIDATE A

CANDIDATE B

U.S. Representative
Vote For Not More Than One (1)

CANDIDATE A

CANDIDATE B

Governor
Vote For Not More Than One (1)

CANDIDATE A

CANDIDATE B

Lieutenant Governor
Vote For Not More Than One (1)

CANDIDATE A

CANDIDATE B

State Senator
Vote For Not More Than One (1)

CANDIDATE A

CANDIDATE B

State Representative
Vote For Not More Than One (1)

CANDIDATE A

Constitution Party (C)

U.S. Senator
Vote For Not More Than One (1)

CANDIDATE A

CANDIDATE B

U.S. Representative
Vote For Not More Than One (1)

CANDIDATE A

CANDIDATE B

Governor
Vote For Not More Than One (1)

CANDIDATE A

CANDIDATE B

Lieutenant Governor
Vote For Not More Than One (1)

CANDIDATE A

CANDIDATE B

State Senator
Vote For Not More Than One (1)

CANDIDATE A

State Representative
Vote For Not More Than One (1)

CANDIDATE A

Aloha Aina Party (A)

U.S. Senator
Vote For Not More Than One (1)

CANDIDATE A

CANDIDATE B

U.S. Representative
Vote For Not More Than One (1)

CANDIDATE A

CANDIDATE B

Governor
Vote For Not More Than One (1)

CANDIDATE A

CANDIDATE B

Lieutenant Governor
Vote For Not More Than One (1)

CANDIDATE A

CANDIDATE B

State Senator
Vote For Not More Than One (1)


CANDIDATE A

State Representative
Vote For Not More Than One (1)


CANDIDATE A

Republican Party (R)
U.S. Senator Vote For Not More Than One (1)
<input type="checkbox"/> CANDIDATE A
<input type="checkbox"/> CANDIDATE B
U.S. Representative Vote For Not More Than One (1)
<input type="checkbox"/> CANDIDATE A
<input type="checkbox"/> CANDIDATE B
Governor Vote For Not More Than One (1)
<input type="checkbox"/> CANDIDATE A
<input type="checkbox"/> CANDIDATE B
Lieutenant Governor Vote For Not More Than One (1)
<input type="checkbox"/> CANDIDATE A
<input type="checkbox"/> CANDIDATE B
State Senator Vote For Not More Than One (1)
<input type="checkbox"/> CANDIDATE A
<input type="checkbox"/> CANDIDATE B
State Representative Vote For Not More Than One (1)
<input type="checkbox"/> CANDIDATE A
<input type="checkbox"/> CANDIDATE B

Democratic Party (D)
U.S. Senator Vote For Not More Than One (1)
<input type="checkbox"/> CANDIDATE A
<input type="checkbox"/> CANDIDATE B
U.S. Representative Vote For Not More Than One (1)
<input type="checkbox"/> CANDIDATE A
<input type="checkbox"/> CANDIDATE B
Governor Vote For Not More Than One (1)
<input type="checkbox"/> CANDIDATE A
<input type="checkbox"/> CANDIDATE B
Lieutenant Governor Vote For Not More Than One (1)
<input type="checkbox"/> CANDIDATE A
<input type="checkbox"/> CANDIDATE B
State Senator Vote For Not More Than One (1)
<input type="checkbox"/> CANDIDATE A
<input type="checkbox"/> CANDIDATE B
State Representative Vote For Not More Than One (1)
<input type="checkbox"/> CANDIDATE A
<input type="checkbox"/> CANDIDATE B

 Office of Hawaiian Affairs
Hawaii Resident Trustee Vacancy Vote For Not More Than One (1)
<input type="checkbox"/> CANDIDATE A
<input type="checkbox"/> CANDIDATE B
Maui Resident Trustee Vote For Not More Than One (1)
<input type="checkbox"/> CANDIDATE A
<input type="checkbox"/> CANDIDATE B
Oahu Resident Trustee Vote For Not More Than One (1)
<input type="checkbox"/> CANDIDATE A
<input type="checkbox"/> CANDIDATE B
At-Large Trustee Vote For Not More Than Three (3)
<input type="checkbox"/> CANDIDATE A
<input type="checkbox"/> CANDIDATE B
<input type="checkbox"/> CANDIDATE C
<input type="checkbox"/> CANDIDATE D
<input type="checkbox"/> CANDIDATE E

Libertarian Party (L)
U.S. Senator Vote For Not More Than One (1)
<input type="checkbox"/> CANDIDATE A
<input type="checkbox"/> CANDIDATE B
U.S. Representative Vote For Not More Than One (1)
<input type="checkbox"/> CANDIDATE A
<input type="checkbox"/> CANDIDATE B
Governor Vote For Not More Than One (1)
<input type="checkbox"/> CANDIDATE A
<input type="checkbox"/> CANDIDATE B
Lieutenant Governor Vote For Not More Than One (1)
<input type="checkbox"/> CANDIDATE A
<input type="checkbox"/> CANDIDATE B
State Senator Vote For Not More Than One (1)
<input type="checkbox"/> CANDIDATE A
State Representative Vote For Not More Than One (1)
<input type="checkbox"/> CANDIDATE A

 County Contests
City and County of Honolulu
Councilmember Vote For Not More Than One (1)
<input type="checkbox"/> CANDIDATE A
<input type="checkbox"/> CANDIDATE B

MARK • MAIL • MATTER

 If you do not sign, your ballot will not be counted!

 Must be received by **7p.m. Election Day** to be counted.
Affix foreign air mail postage if mailed from a foreign postal facility.



1-987654 9123456 Dist-Prec: 40-04 P BTC: 518
1234 ALOHA LN



AFFIRMATION STATEMENT

In signing, I affirm: I am a resident and registered voter of the precinct and representative district as indicated on the left and have voted this ballot without the personal assistance of my employer, union agent, or any candidate.

SIGN IN BOX

JOE A. VOTER

A witness must sign below only if a voter uses a mark as a signature.
Power of attorney is NOT acceptable.

Witness Signature

Address/Phone

JOE A. VOTER
PO BOX 9999
HONOLULU, HI 96813



Karool Polot (Nomba 10) Majej ko ilo Kilin Letā

Ñe kwōjab jain, polot eo am ebañ bōnōbōn!

Rej aikuj loe mokta jen 7 awa jota ilo Raan in Ekeeel eo ñan an bōnōbōn

Likūt wonnen an mael ilo baluun ñan aelon ko ilikin jen juon jikin mael an aelon ko jet

Kwōaikuj ke bar juon polot? Lale www.honoluluelections.us ñe ejab kall ae opij eo amim ilo 808-768-3800.

OPIJ EO AN CITY CLERK
PO BOX 30940
HONOLULU HI 96820-9971

AFFIRMATION STATEMENT

Ilo aō jain, ij kamool: Na juon eo ej jokwe im emōj kadeloñ etta in bout ilo jikin eo imōn bulijmaan ej bōk eddon im bukon eo rikwelok eo einwōt emōj kalikar ilo anmiin im emōj aō bout ilo polot in ilo an ejellok jibañ jen jikin jermal eo aō, rikōmadmōd eo an jikin jermal eo aō, rikōmadmōd in doulul in jermal eo aō, ak jabdewōt rijabdōk jea emōj laajrak etan ilo polot eo.

Jaini Etam iloan Bok

Juon rikamool aikuj jaini etan ijin lal wōt elañe ribout eo enaj kōjermal juon kakōlle einwōt jain in etan. EJAB melim Peba in Kakien ej Lelok Maron.

Jain in Etan Rikamool

Atorej/Talebōn