

Aloha!

Parks Board

Program Committee



Agenda

- Preliminary Evaluation of Summer Fun 2025:
 - Staffing Assessment
 - Enrollment Assessment
 - Benchmark Initiative
 - Face Case Initiative at Waianae District Park



Staffing Assessment for 2025

Staff needed: 390

Staff hired: 366 (6% vacancy)

District I = 95 needed, 90 hired

District II = 89 needed, 86 hired

District III = 78 needed, 78 hired

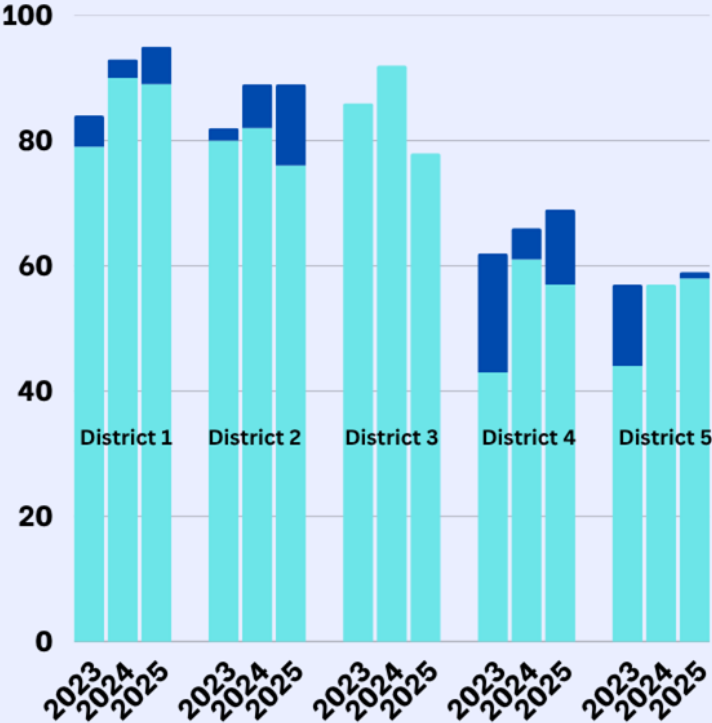
District IV = 69 needed, 54 hired

District V = 59 needed, 58 hired



Staffing Assessment

STAFFING ASSESSMENT (2023-2025)



Building our Student Aide I Pipeline

Student Aide I hired in 2024: 22

New Student Aide I hired in 2025: 40

District I = 12

District II = 3

District III = 9

District IV = 5

District V = 11



Looking towards 2026

Recruitment efforts we want to focus on:

- * Increased collaboration with universities, colleges, and high schools
 - * Increased collaboration with other organizations and agencies
 - * Increased social media presence
- * Continue to build our pipeline from current program participants



Enrollment Assessment for 2025

Registered Summer Fun Participants (Children): 8,242

Registered Junior Leader Participants (Teens): 1,305

Total Youth Serviced: 9,547



Summer Fun Registration Counts

Summer Fun Enrollment Capacity: 9775 children

Registered Summer Fun Participants: 8242 children (84% of Cap)

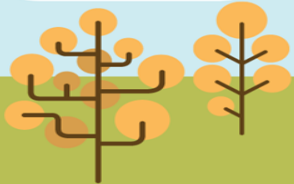
District I: 2375 Cap, 2164 Enrolled (91.12% Filled)

District II: 2275 Cap, 1729 Enrolled (76% Filled)

District III: 1925 Cap, 1748 Enrolled (90.81% Filled)

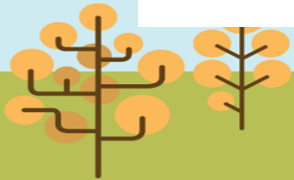
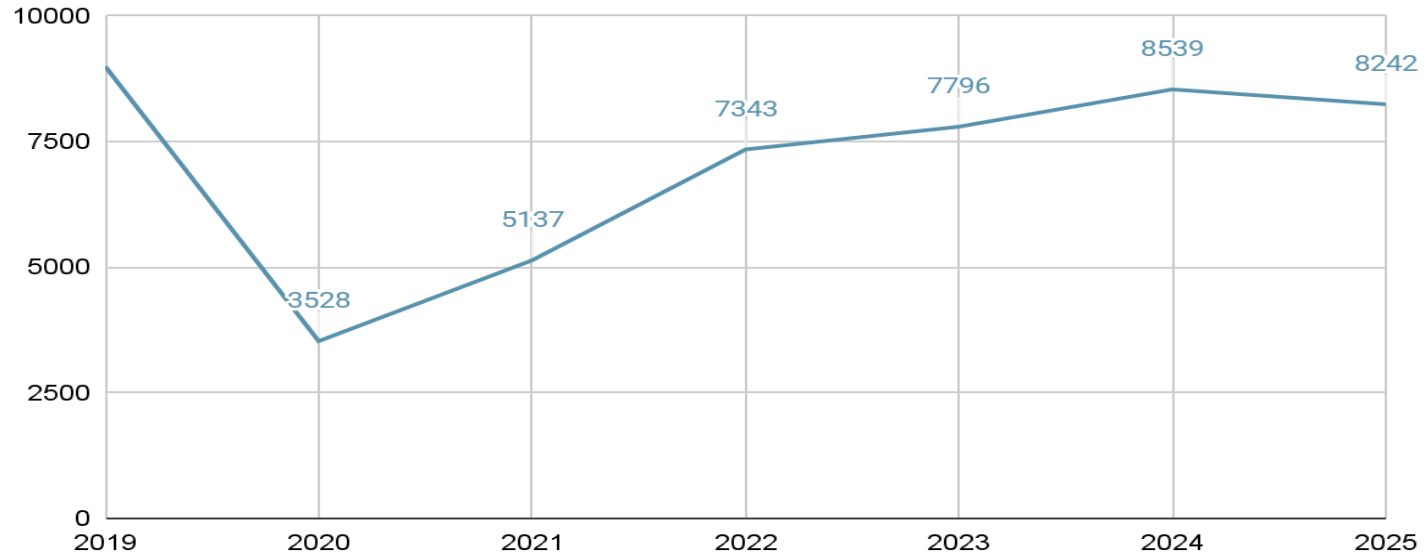
District IV: 1725 Cap, 1194 Enrolled (69.22% Filled)

District V: 1475 Cap, 1407 Enrolled (95.39% Filled)



Enrollment Assessment

Enrollment Numbers - Children



Junior Leader Enrollment

Registered Junior Leader Participants (Teens): 1,305

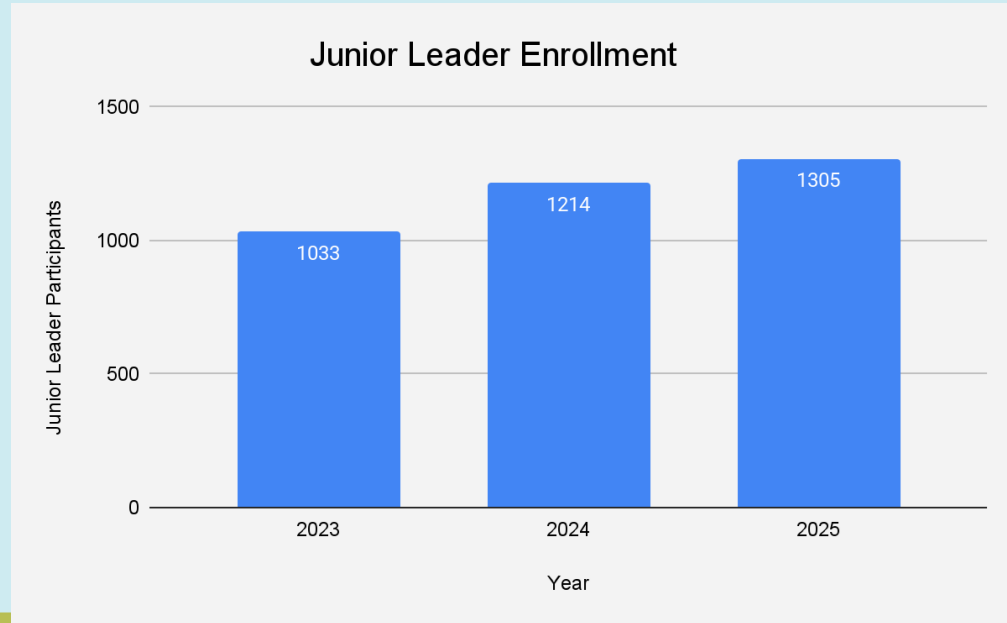
District I: 493

District II: 283

District III: 246

District IV: 103

District V: 180



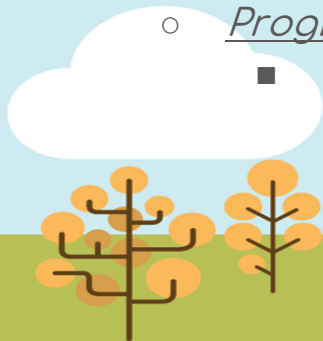
Summer Fun Enrollment Challenges

- Staffing shortage
- Late onboarding of staff
- Reinstating fees for Summer Fun



Benchmark Initiative

- Created a baseline of achievements that DPR wants for children and junior leaders to experience in our Summer Fun Program
- Benchmarks:
 - Children:
 - 5 hours of physical activity per week
 - 3 activities focusing on Social, Emotional, Learning (Malama)
 - Bingo Worksheet
 - Four Corners
 - Skit/Dance
 - Junior Leaders:
 - 4 opportunities to lead an activity (in the group, at an assembly, etc)
 - Program Partnerships:
 - 2 Community Collaborations in the program period

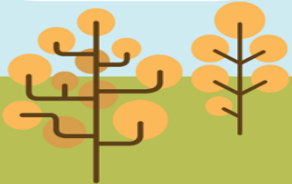


Face Case Initiative at Waianae District Park

Each District has face case initiatives but we want to highlight the efforts at Waianae District Park.

Waianae Summer Fun - Before & After Care

- Conducted Monday to Friday from 6:00am - 8:30am & 2:00pm - 5:30pm
- 60 participants enrolled in both before & after care
- Supported by Department of Health & Prosecuting Attorney's Office through the Opioid Grant Settlement Fund
- Staffing was a challenge but Ms. Andrea was able to secure two staff for this program
- We look forward to expanding this program to other parks that need this service within the department



Mahalo!

