



# WAHIAWĀ

## WALKWAYS PROJECT



### THE OPPORTUNITY

The City and County of Honolulu’s Complete Streets Office has developed a new program to design and construct high-priority walkways recommended in the O’ahu Pedestrian Plan. The initiative’s goal is to create safe, accessible, and vibrant streets to enable people of all ages and abilities to get around safely and comfortably by walking and using other forms of active transportation.

Phase 1 of the program will include projects in six neighborhoods across O’ahu: **Wai’anae**, **Kalihi-Pālama**, **Wahiawā**, **Waipahu**, **McCully-Mō’ili’ili**, and **Kapahulu**. Sidewalk gaps in these neighborhoods were prioritized based on an analysis of factors like proximity to schools, bus routes, connectivity, and crash history. The streets selected for the Walkways Project will connect residents and visitors to key destinations including educational facilities, transit, employment, commercial centers, and

### PLANNING PROCESS



Community outreach and feedback is essential to make sure the project responds to the needs of diverse road users across the project neighborhoods. The project team will consult with landowners, elected officials, and other key stakeholders to gather community feedback.

### THE PROJECT AREA

The Walkways Project in **Wahiawā** aims to improve pedestrian safety and accessibility along key streets:

- **California Avenue** (from North Kamehameha Highway to the 2200 block of California Ave), and
- **Glen Avenue / ‘U’uku Street** (from California Ave to the vicinity of Kellog Street).

The project proposes to construct missing sidewalks, shared use paths, pedestrian refuge islands, RRFBs, curb extensions, protected bike lanes and improve pedestrian crossings.

### PROVIDE YOUR INPUT

We’d like to hear your questions, comments and/or concerns about the project. If you would like to provide your input or receive updates about this project, please contact:

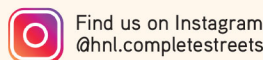


Complete Streets Program  
[completestreets@honolulu.gov](mailto:completestreets@honolulu.gov)  
Phone: (808) 768-6657



#### JOIN OUR MAILING LIST

Please visit the project website for more information, to sign up for the project mailing list, and to provide your input.  
[www.honolulu.gov/completestreets/central-oahu/](http://www.honolulu.gov/completestreets/central-oahu/)



# WAHIAWĀ

## POTENTIAL IMPROVEMENTS

The following improvements are under consideration as part of the Wahiawā Walkways Project. These images provide visual examples of potential improvements and do not represent final designs.

### 1 FLASHING SIGN (RRFB)

Kāilua Rd, Kāilua, HI



### 2 PEDESTRIAN REFUGE ISLAND

Glen Ave, Wahiawā HI



### 3 PROTECTED BIKE LANES

Ward Ave, Honolulu, HI



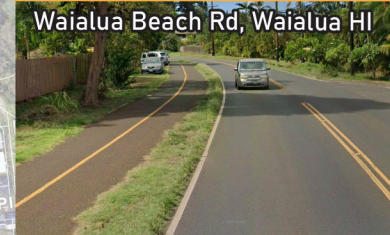
### 4 CONCRETE SIDEWALKS

California Ave, Wahiawā HI



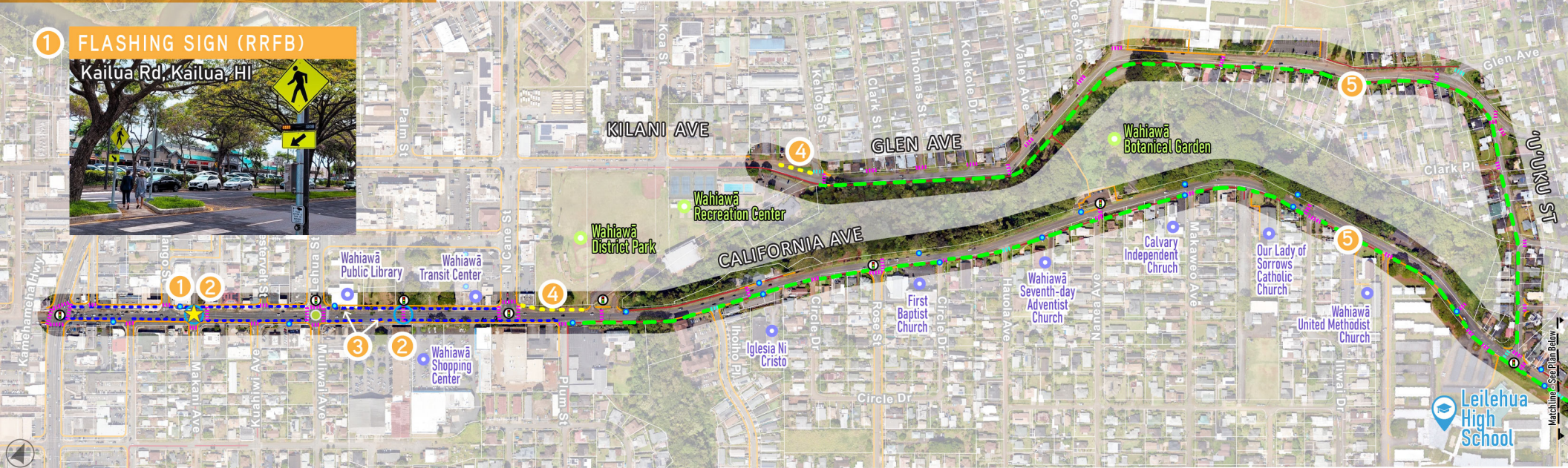
### 5 SHARED USE PATH

Waialua Beach Rd, Waialua HI



### 6 MARKED CROSSWALKS

California Ave, Wahiawā HI



**Legend**

- Existing concrete sidewalk
- Existing AC sidewalk
- Proposed shared use path
- Proposed protected bike lane
- Proposed concrete sidewalk
- Existing crosswalk
- Proposed crosswalk
- Proposed rectangular rapid flashing beacon (RRFB)
- Proposed pedestrian refuge island
- Proposed speed hump (separate project)
- Bus stops
- Existing Traffic Signal
- Schools
- Points of interest
- Recreational facilities

★ Project Location

